

# New Silent Tender to make Cannes debut alongside Silent 60 with kite wing

📅 Wednesday, July 27th, 2022    💬 No comments

**In:** Leisure Marine

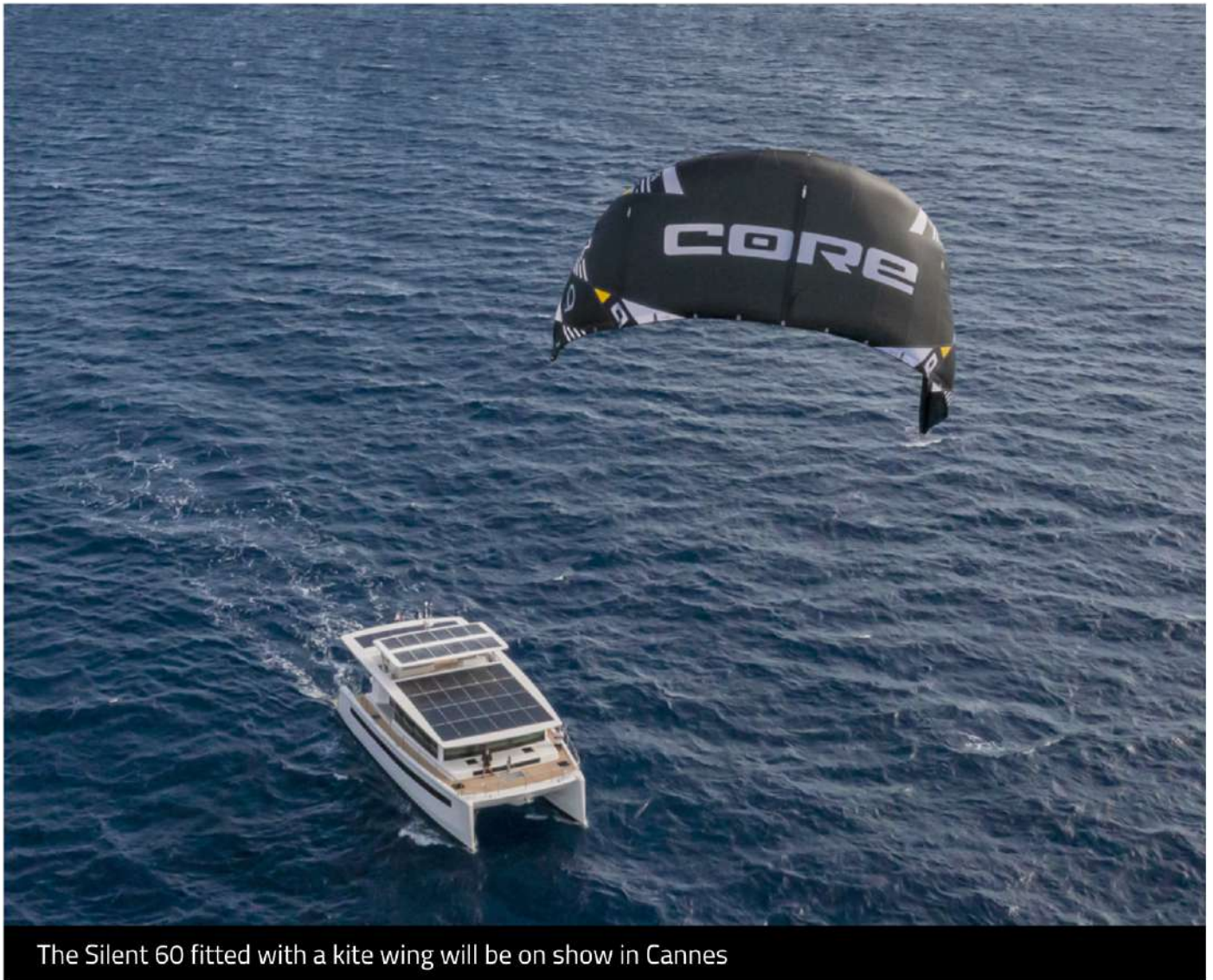


Silent-Yachts is set to debut two vessels at this year's Cannes Yachting Festival in September; the Silent Tender and Silent 60 with kite wing.

The [Silent 60 fitted with a kite wing](#) will be on display in Cannes for the first time. The light, compact kite wing generates up to 10 times more power per square metre than a conventional sail, according to Silent-Yachts.

Launched from a fold-away mast structure on the foredeck, the kite wing offers extra propulsion, with the kite able to pull the 30-ton yacht to a claimed speed of 4-5 knots.

The first Silent Tender will also be on display in Cannes. The ST400 model, the first in the range, is 4 metres in length and its clean-cut lines are built of carbon fibre. It can be lifted out of the water and stored on the hydraulic stern platform of the Silent 60 and be recharged with clean solar energy produced by the yacht.



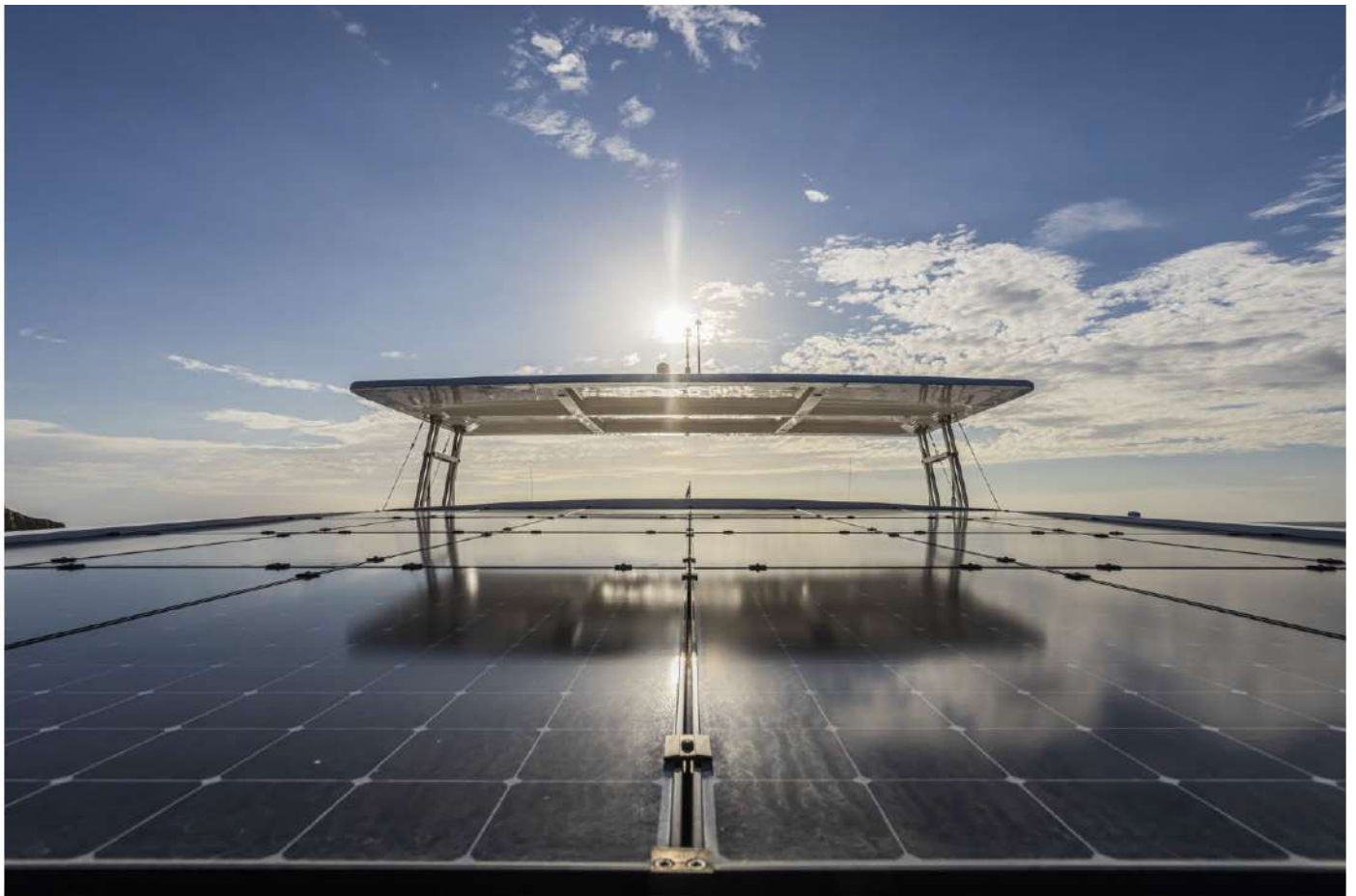
The Silent 60 fitted with a kite wing will be on show in Cannes

The new Silent Tender is available with two different electric drive trains. Option one is an electric jet drive. Alternatively, the ST400 can also be equipped with a conventional 30kW electric outboard engine. Both systems offer a claimed top speed of above 20 knots. Silent-Yachts says a larger tender is already being planned.

"I'm immensely proud of what Silent-Yachts has achieved over the years and the first Silent Tender 400 is just the latest innovation in our sustainability journey," says [Silent-Yachts](#) founder and CEO Michael Köhler.

"After starting with research into solar yacht technology, we have evolved and expanded both our product lines and production space. But we remain true to our roots of harnessing new technology and clean energy to promote sustainability."

The solar-powered Silent 60 catamaran carries 42 solar panels providing 17kWp of solar energy to drive two electric motors of up to 340kw each.



With a battery capacity of up to 286kWh, Silent-Yachts says the boat can cruise efficiently with zero emissions solely on solar power for up to 100 nautical miles a day for weeks.

Featuring a new, high-performance hull form with a longer waterline and reverse bow, the yacht has a cruising speed of 6-8 knots, with the yard claiming a top speed of 20 knots.

Guest accommodation comprises four guest cabins on the lower deck, including a spacious master suite, but other layout solutions are available.

