

Silent 60



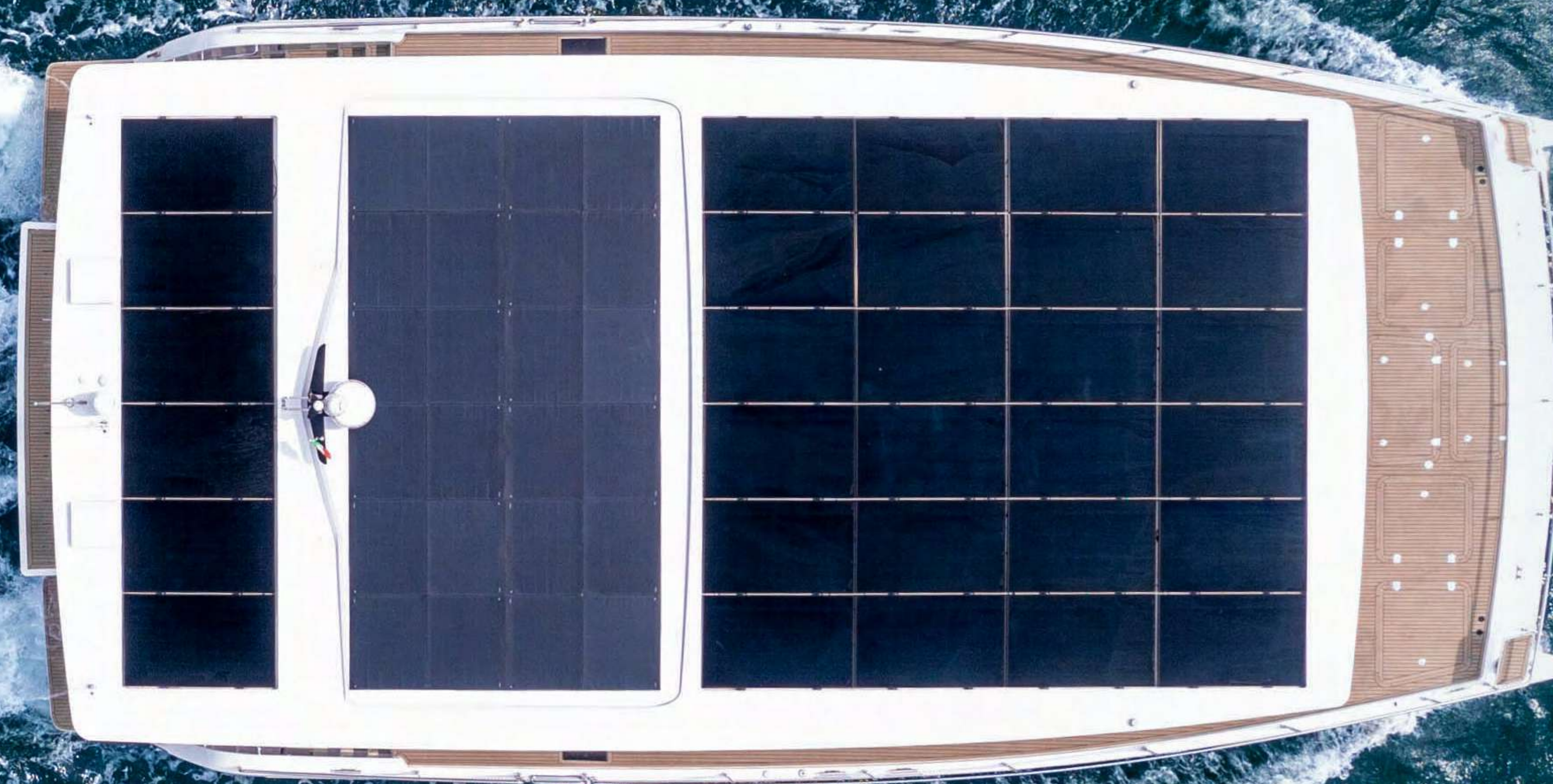
SILENT

1-3	Introduction
4-5	Silent 60
6-10	Exterior
11	Specifications
12-15	Flybridge
16-29	Main deck
30-41	Lower deck
42-46	Floor plans & living space
47	Silent advantages
48	Silent assurances
49-51	Propulsion options
52	Kite sail system
53	Specifications & options

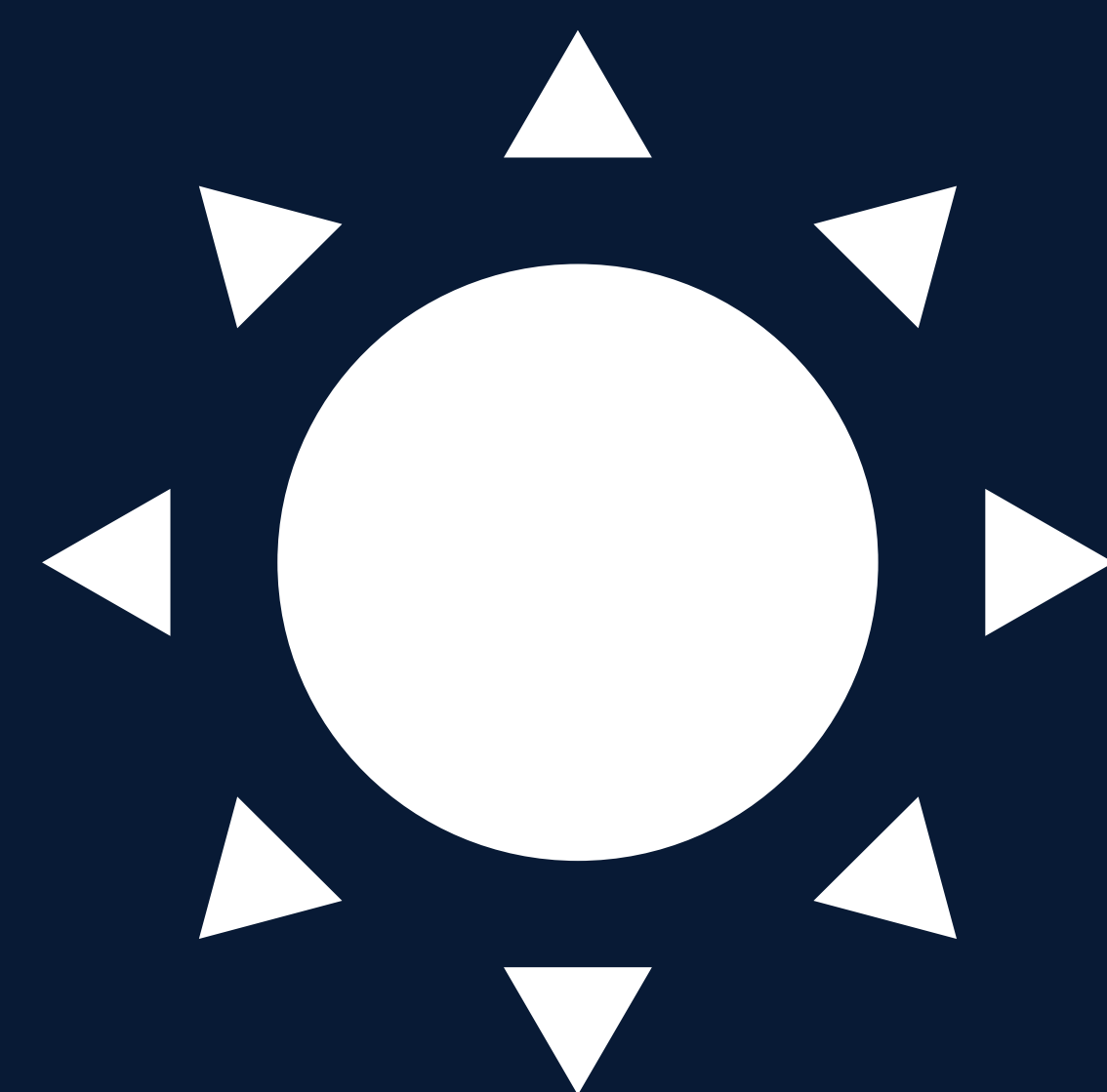


Create an independent and environmentally friendly yachting experience
which combines the silent cruising of a sailboat
with the luxury of a motor yacht.

THE FUTURE OF YACHTING IS SOLAR



Embrace the sound of silence.
Preserve the purity of the ocean.
Experience unprecedented levels of tranquility and pleasure.



SOLAR POWER

for propulsion as well as all navigation, household & comfort appliances on board.



WORLD RECORD

2018 - Silent 64 first ever solar powered production yacht to cross the Atlantic ocean.



AWARD WINNING

technology 17x awards won honoring our drive for innovation since 2009.





THE ICONIC ORIGINAL - REINVENTED

The Silent 60 embodies the next generation of the legendary Silent 64, the first production solar powered yacht to have ever crossed the Atlantic.

The optional hydraulic platform allows the possibility to upgrade the tender from 3.8 m to 4.2 m in length. For adventurers, additional water toys, sups, kayaks and e-bikes can be stored in the bridge deck.

She is also available in a front exit version, which is equipped with an additional entrance in the front of the salon, allowing guests to directly step onto the foredeck.

Silent 60



GERMAN
DESIGN
AWARD
SPECIAL
2021



EXTERIOR
FRONT MASTER





GERMAN
DESIGN
AWARD
SPECIAL
2021



EXTERIOR
FRONT MASTER





GERMAN
DESIGN
AWARD
SPECIAL
2021



EXTERIOR
FRONT EXIT





GERMAN
DESIGN
AWARD
SPECIAL
2021



EXTERIOR
FRONT EXIT





GERMAN
DESIGN
AWARD
SPECIAL
2021



EXTERIOR
FRONT EXIT



SPECIFICATIONS



19 m (62 ft)	Length overall
8.99 m (29.5 ft)	Beam overall
0.93 m (3.9 ft)	Draft
34 tons	Light displacement
900 L to 2200 L	Water
1000 L	Wastewater
1000 L to 1900 L	Fuel
16 kWp	Solar panels
CE-A	Certification
Trans-Ocean	Range

Solar array



Lounge area



Lounge area



Helm station



Cockpit



Cockpit

MAIN DECK



Sidewalk

MAIN DECK
FRONT MASTER



Salon

MAIN DECK
FRONT MASTER

Salon

MAIN DECK
FRONT MASTER



Helm station



Salon

MAIN DECK
FRONT MASTER



Galley

MAIN DECK
FRONT MASTER



Galley

MAIN DECK
FRONT MASTER



Salon

MAIN DECK
FRONT EXIT

Salon

MAIN DECK
FRONT EXIT

Salon

MAIN DECK
FRONT EXIT



Galley



MAIN DECK
FRONT EXIT



Galley

LOWER DECK
FRONT MASTER



Master cabin

LOWER DECK
FRONT MASTER



Master cabin



LOWER DECK
FRONT MASTER

Master bath



LOWER DECK
FRONT MASTER

Master bath

LOWER DECK
FRONT MASTER



Guest cabin

LOWER DECK
FRONT EXIT

Master cabin

LOWER DECK
FRONT EXIT



Master cabin

LOWER DECK
FRONT EXIT

Master cabin



LOWER DECK
FRONT EXIT

Master bath

LOWER DECK
FRONT EXIT



Master bath

LOWER DECK
FRONT EXIT



VIP cabin

LOWER DECK
FRONT EXIT

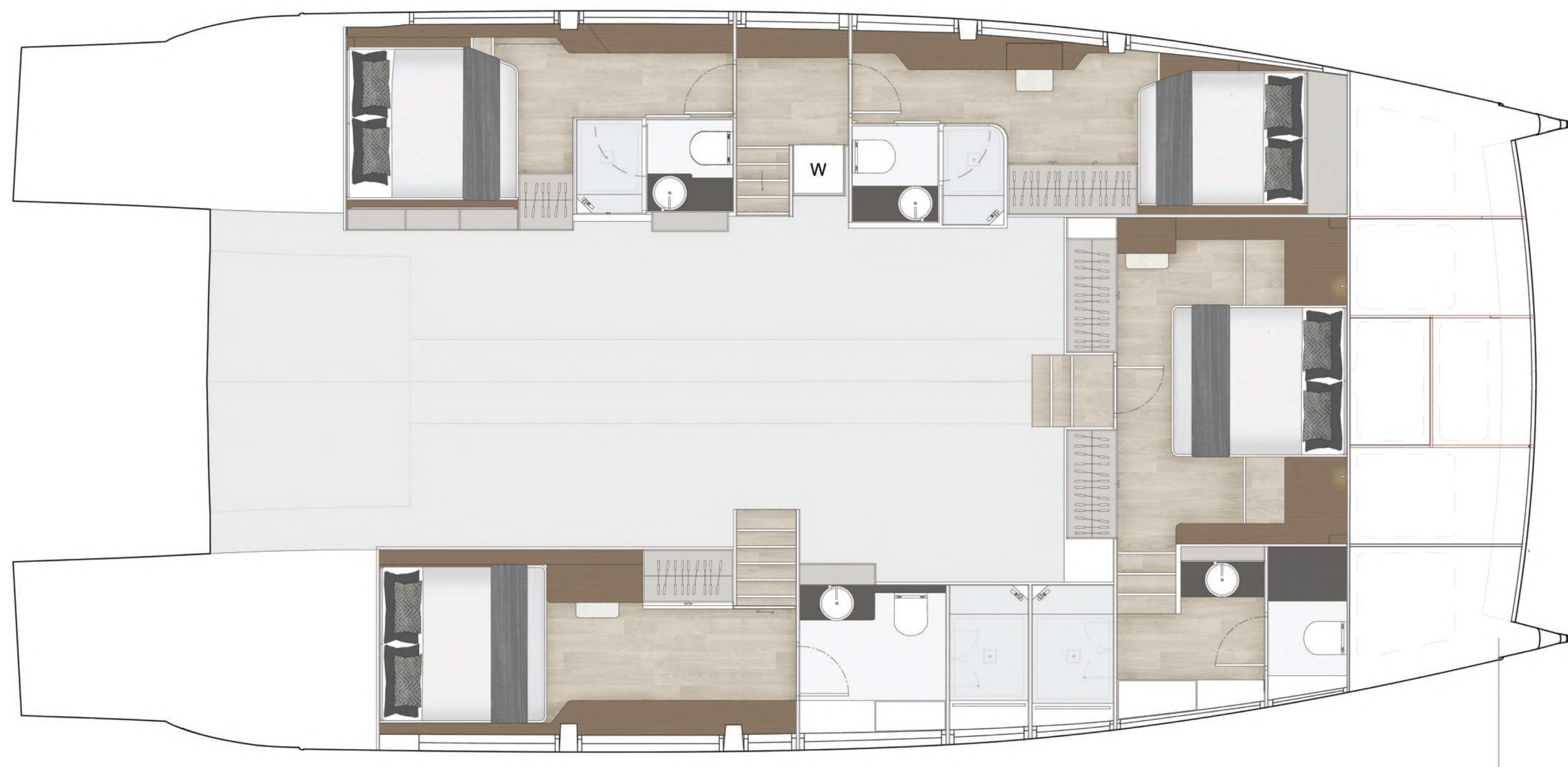


Guest cabin

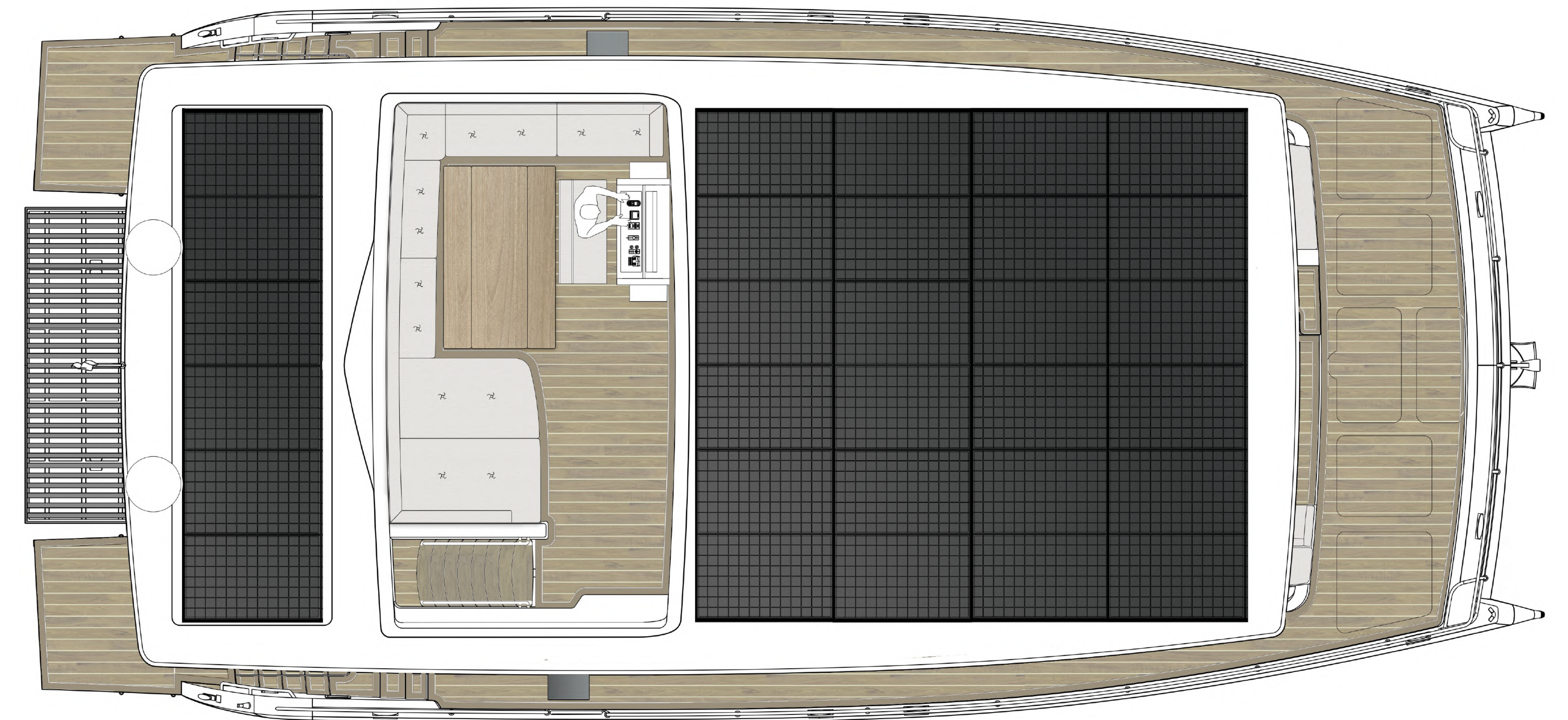
FLOOR PLANS FRONT MASTER



Main deck

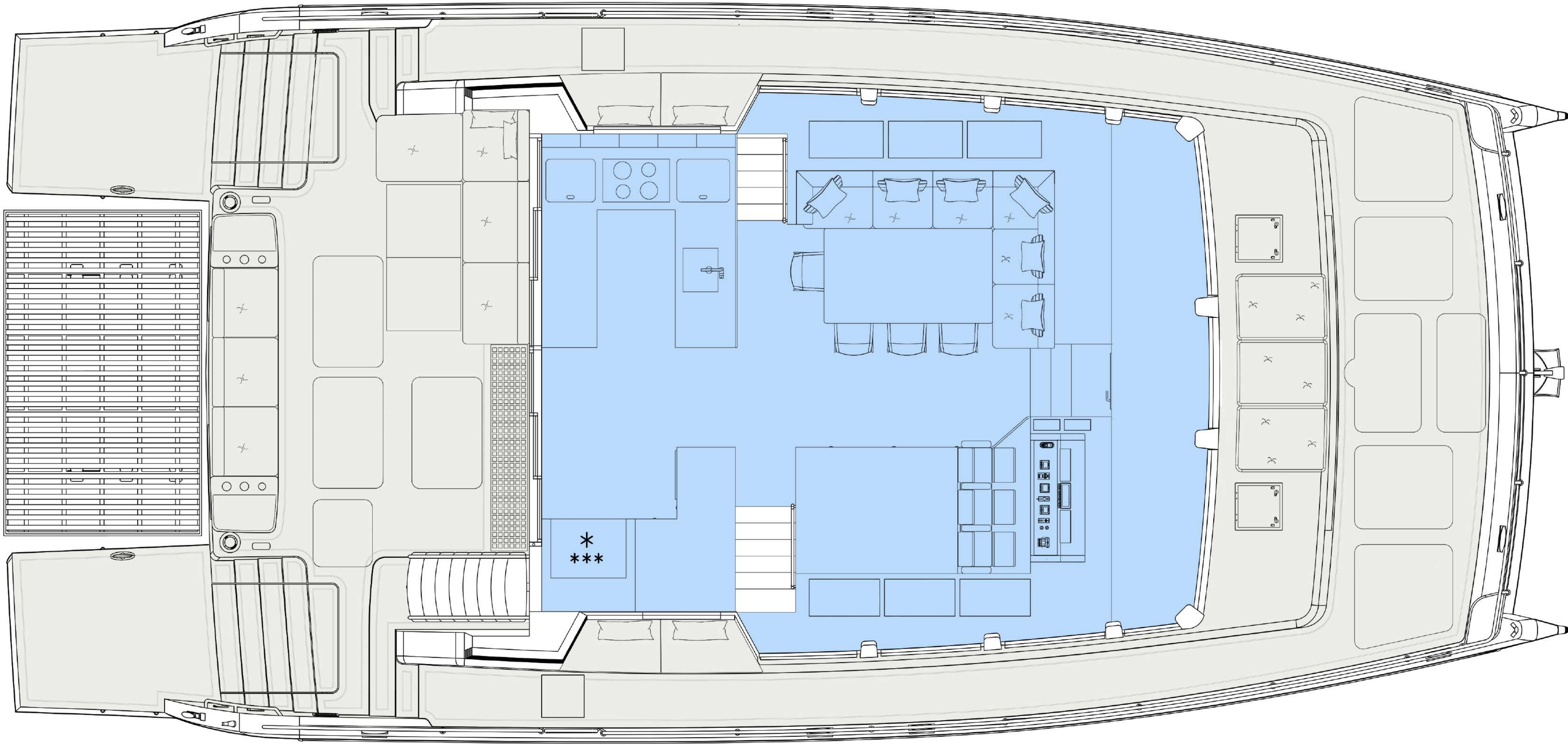


Lower deck
4 Cabins / 4 Bathrooms

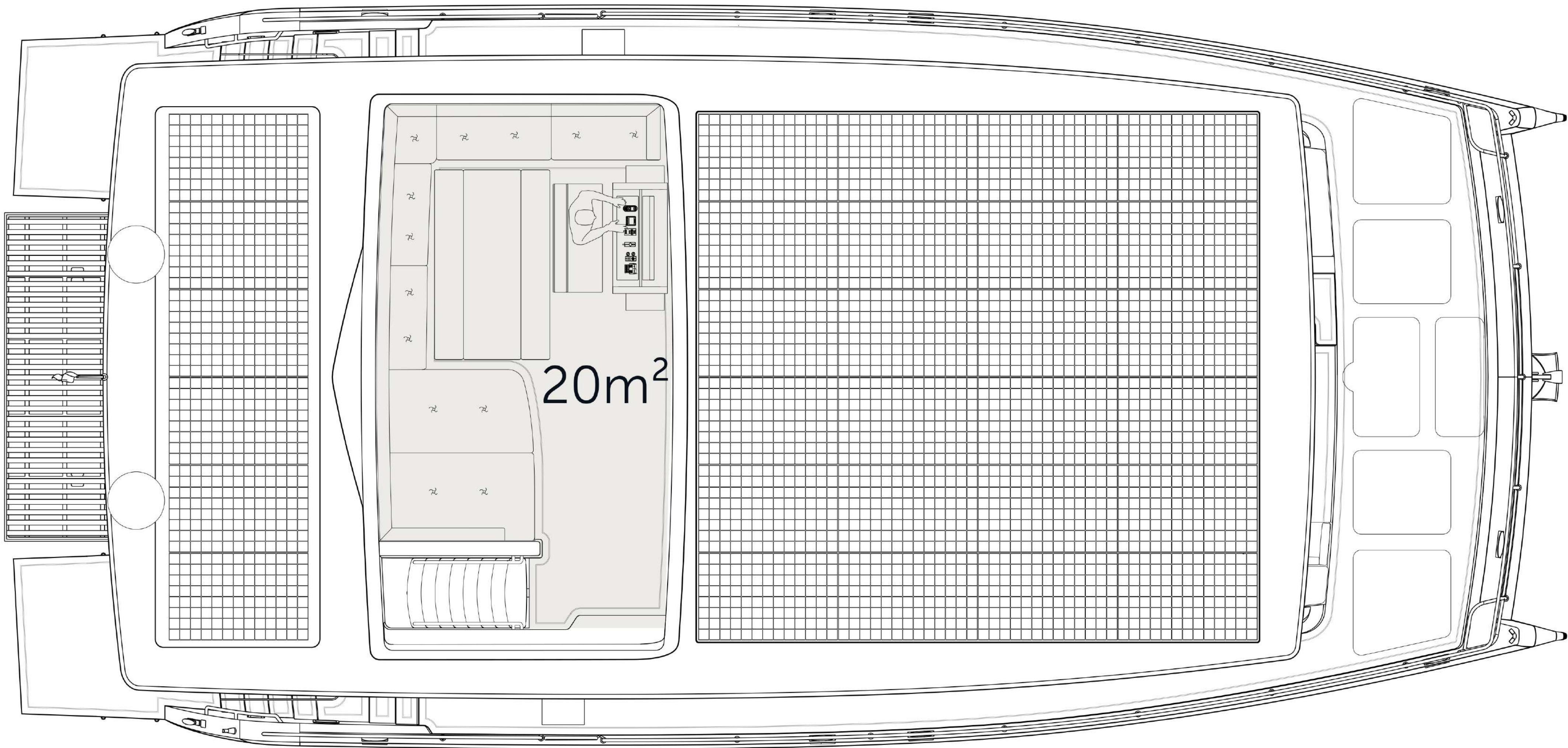


Flybridge

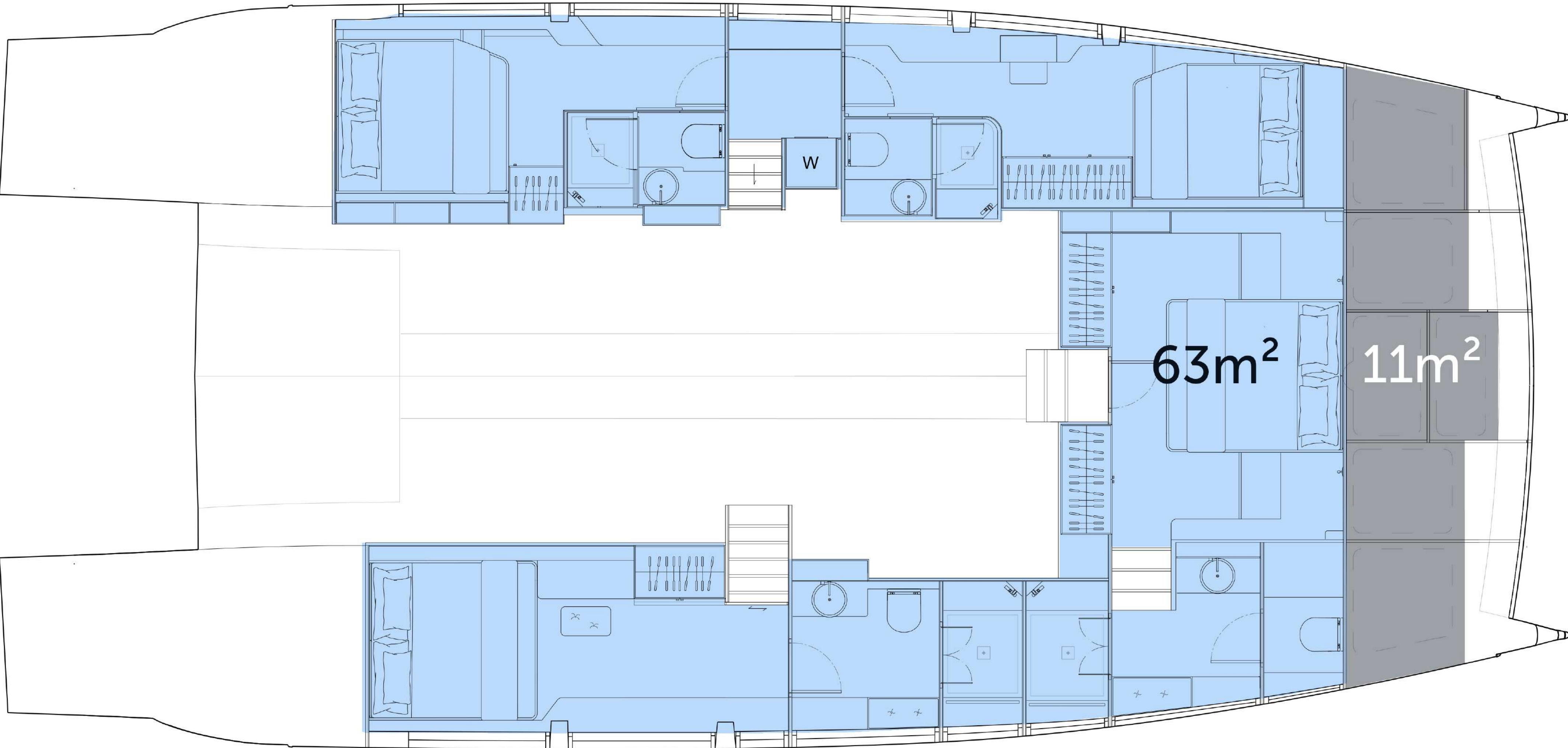
LIVING SPACE
FRONT MASTER



Main deck

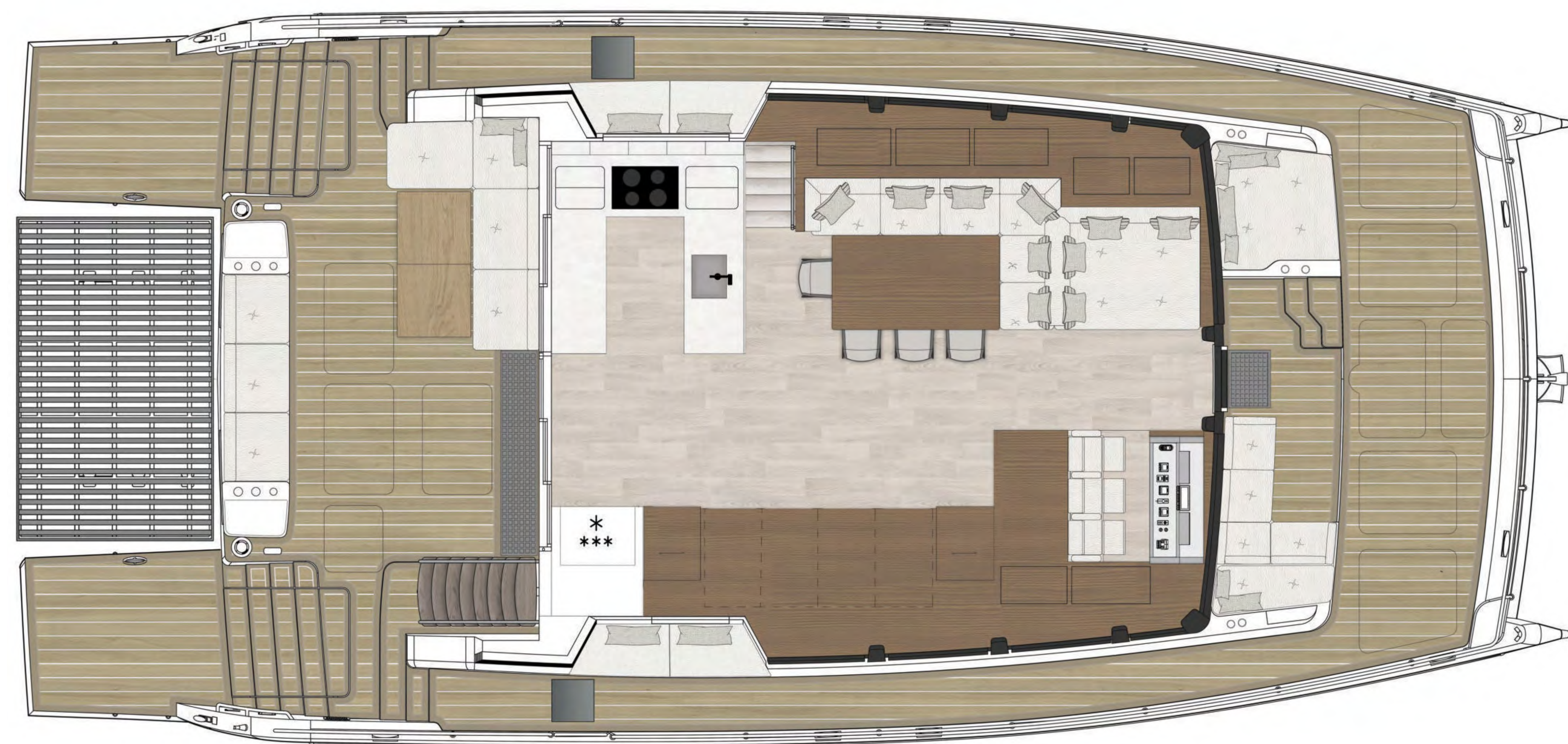


Flybridge

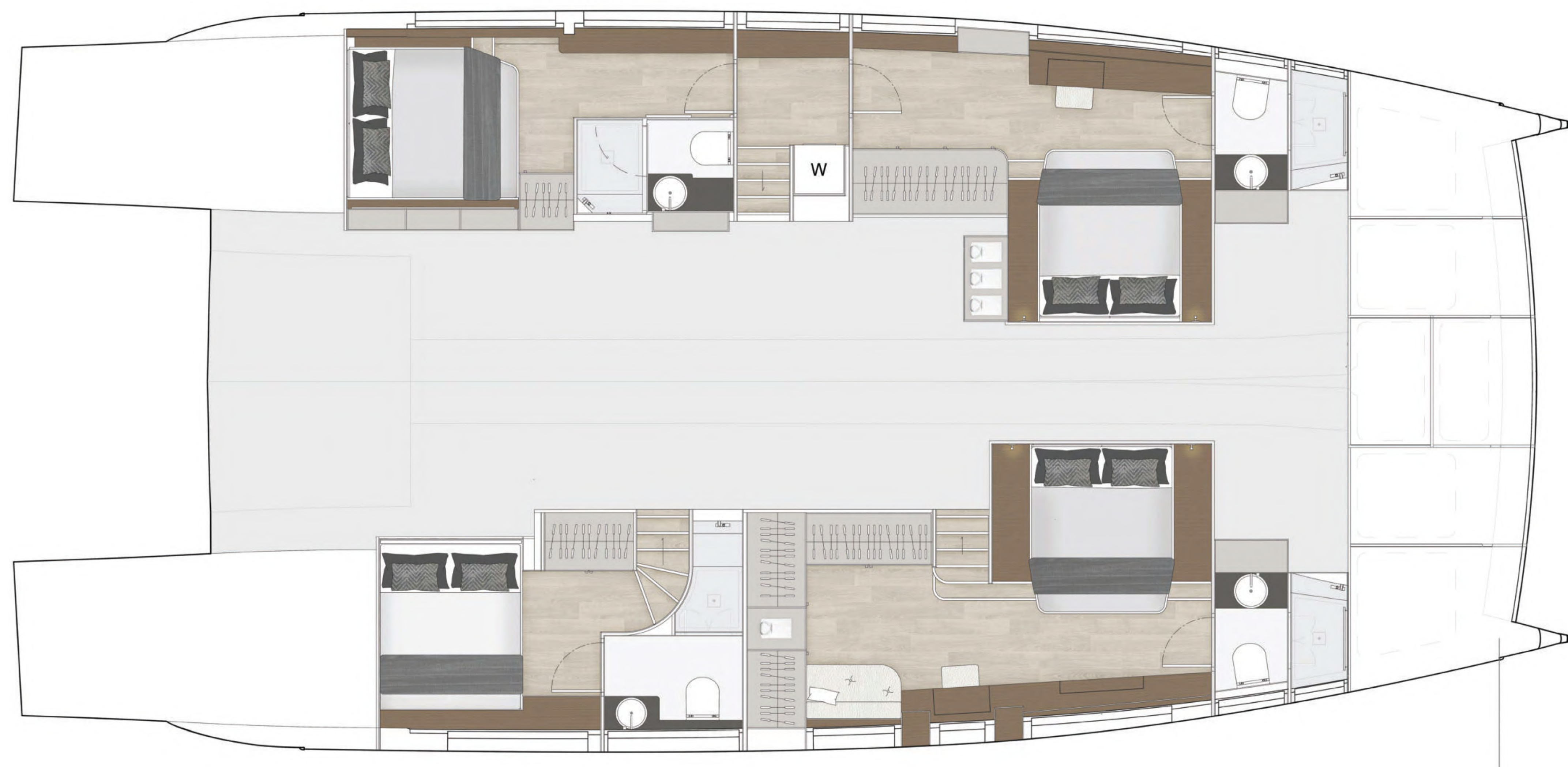


Lower deck
4 Cabins / 4 Bathrooms

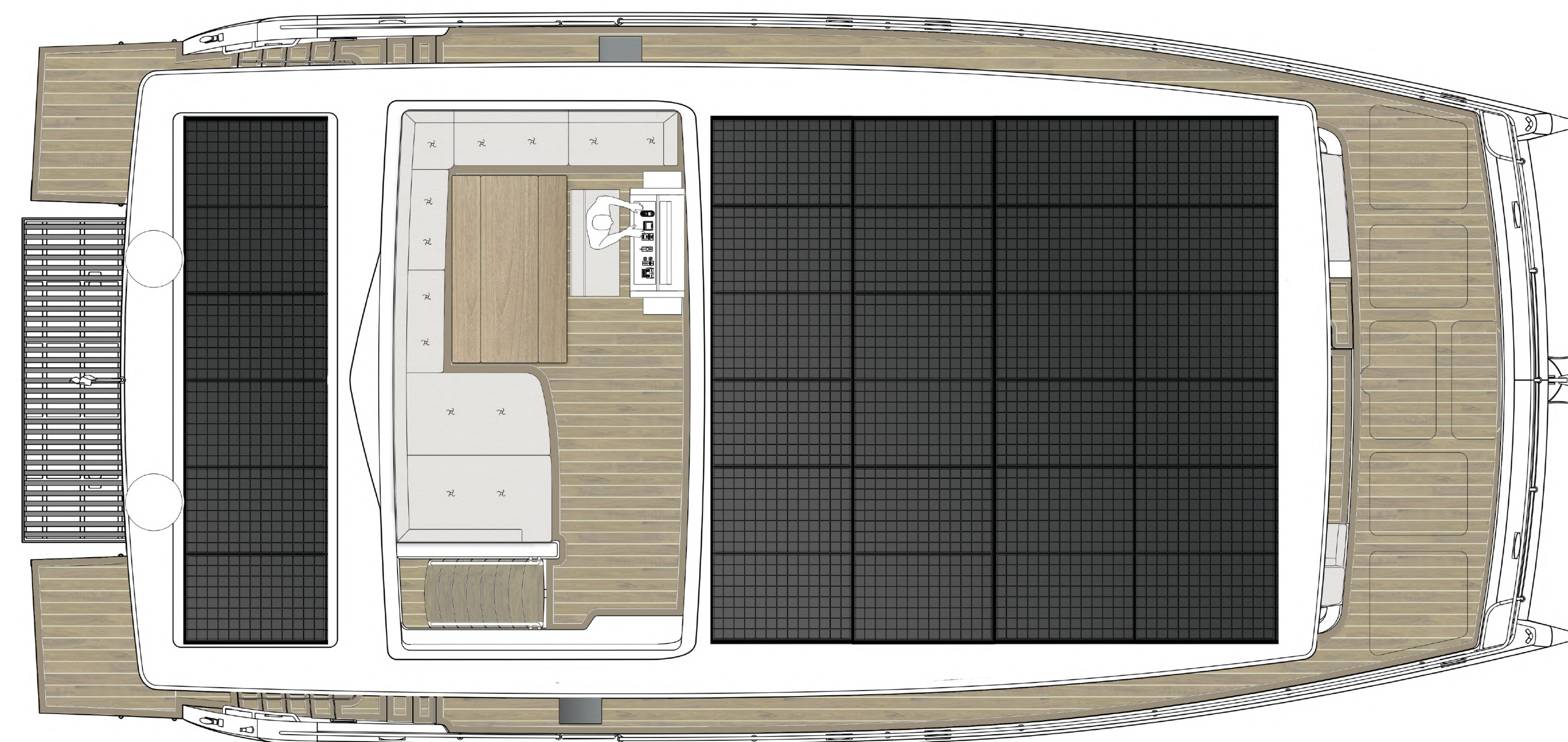
FLOOR PLANS FRONT EXIT



Main deck



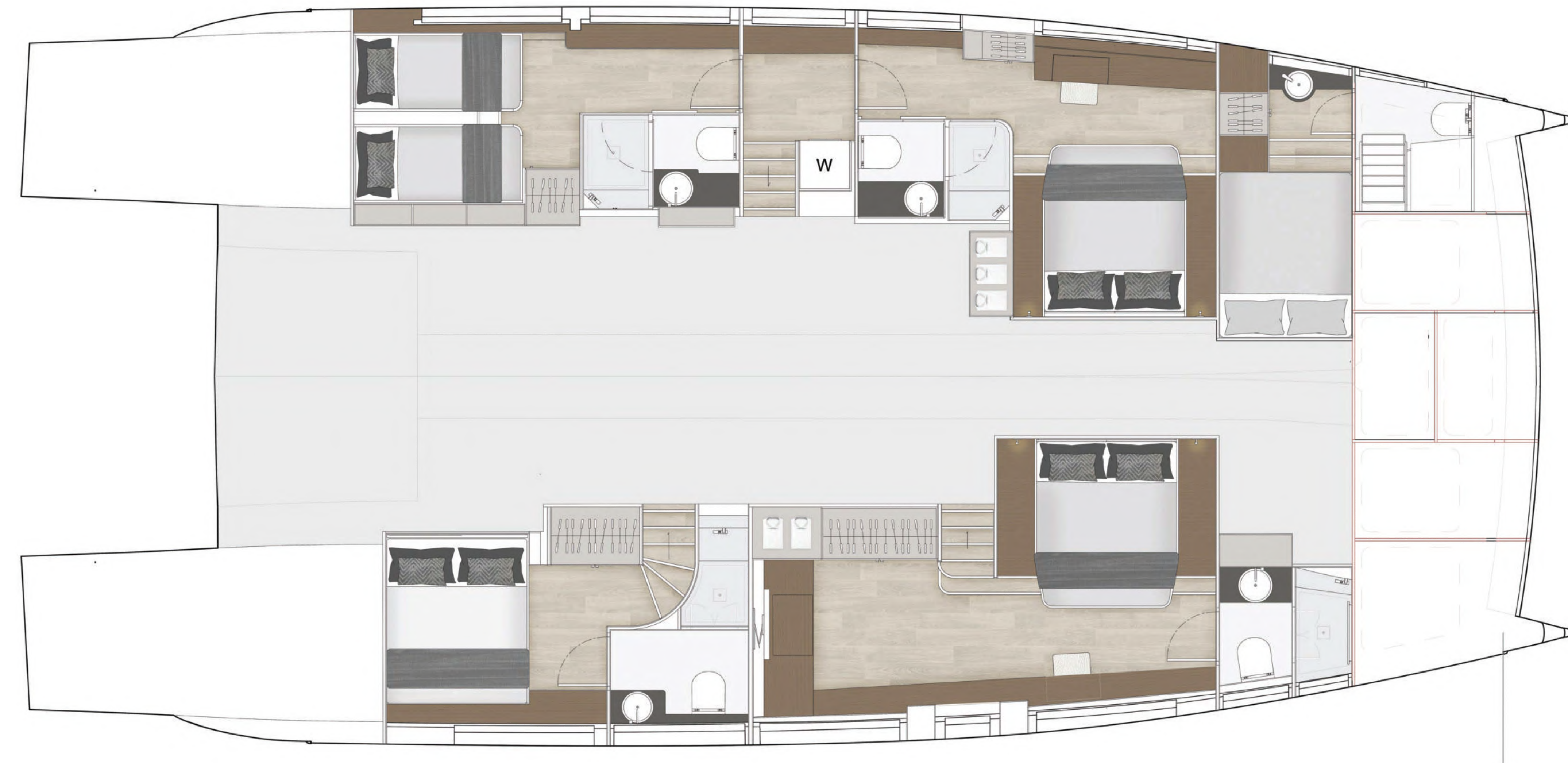
Lower deck
4 Cabins / 4 Bathrooms



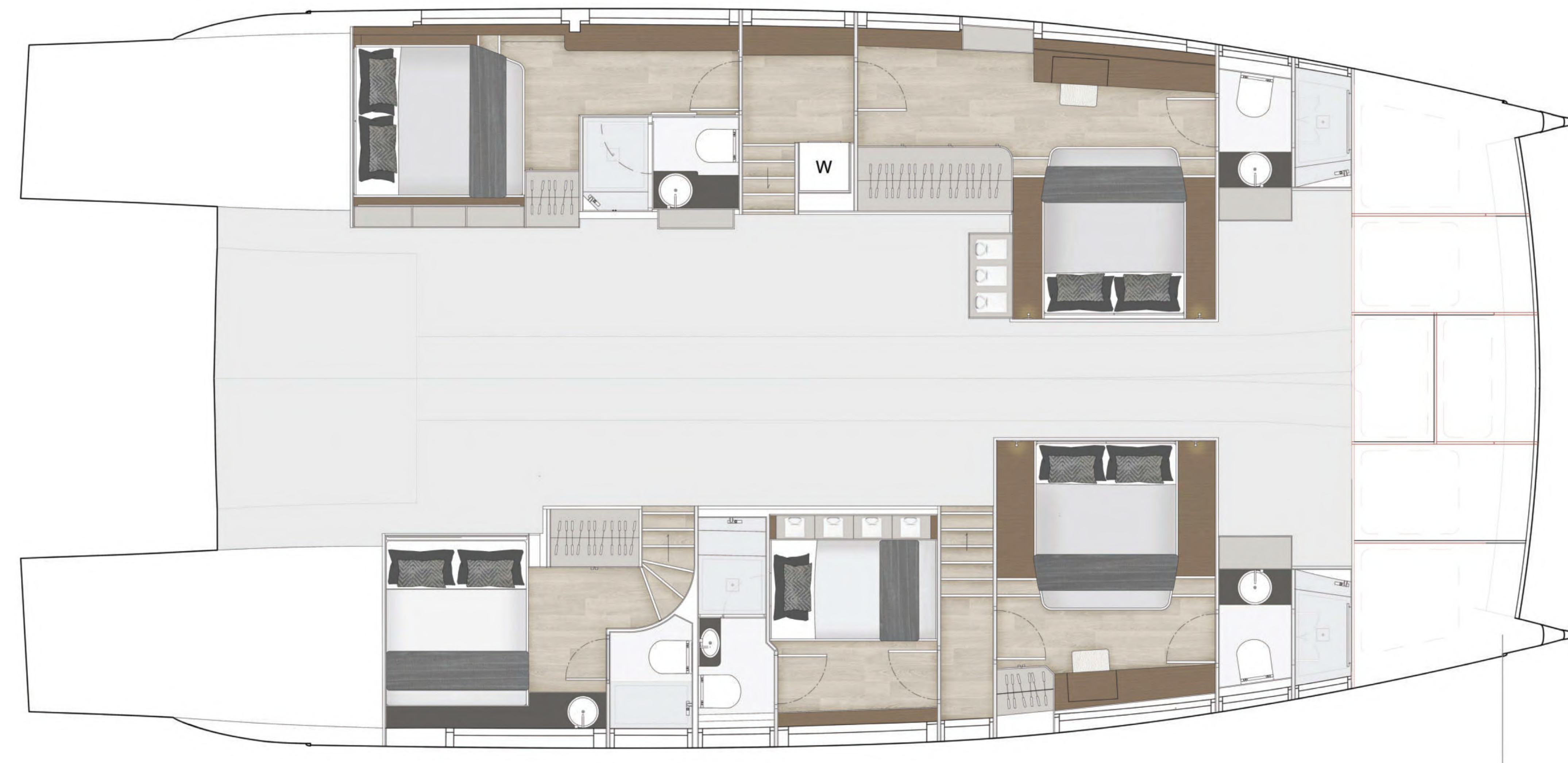
Flybridge

FLOOR PLANS

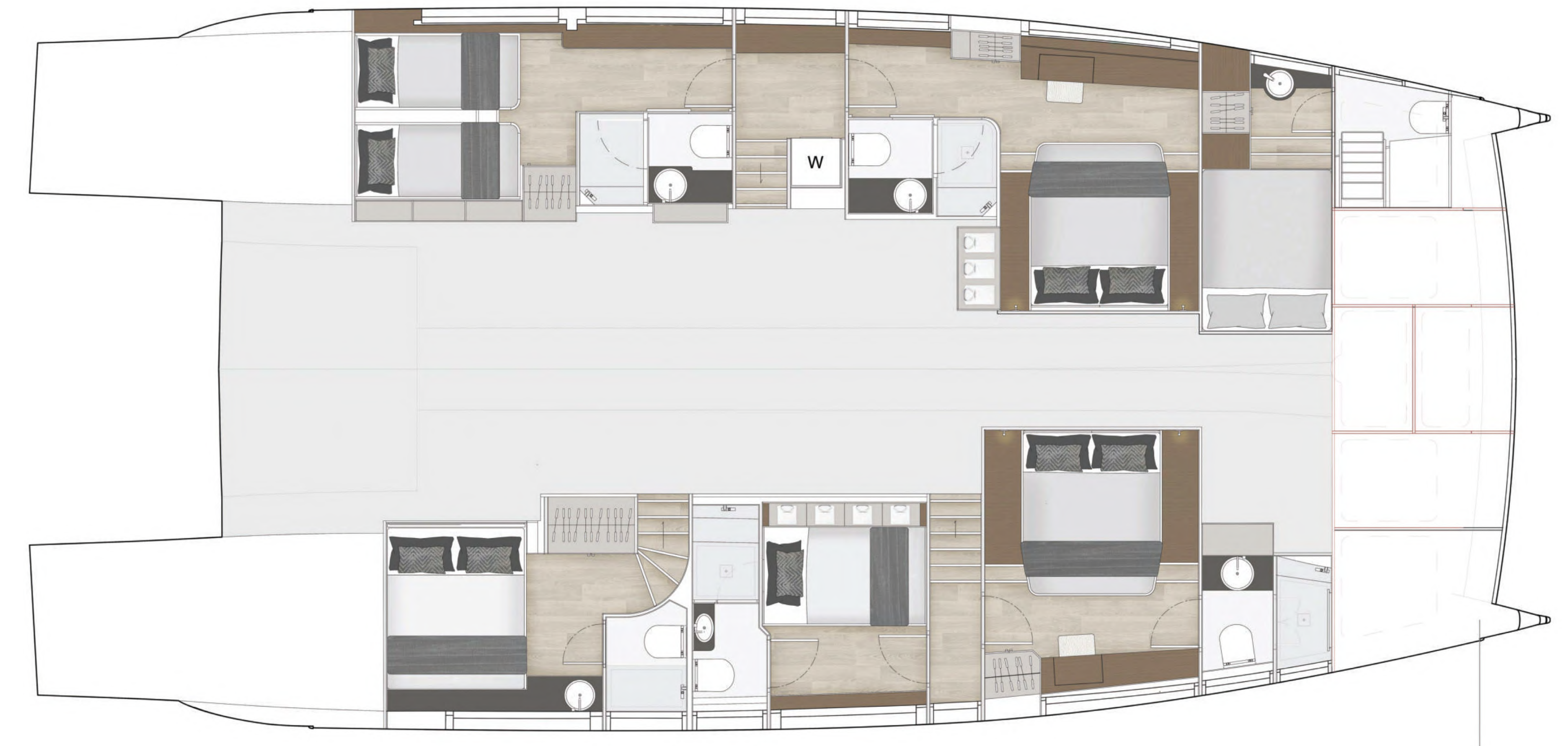
CABIN VARIATIONS - FRONT EXIT



Lower deck
4+1 Cabins / 4 Bathrooms

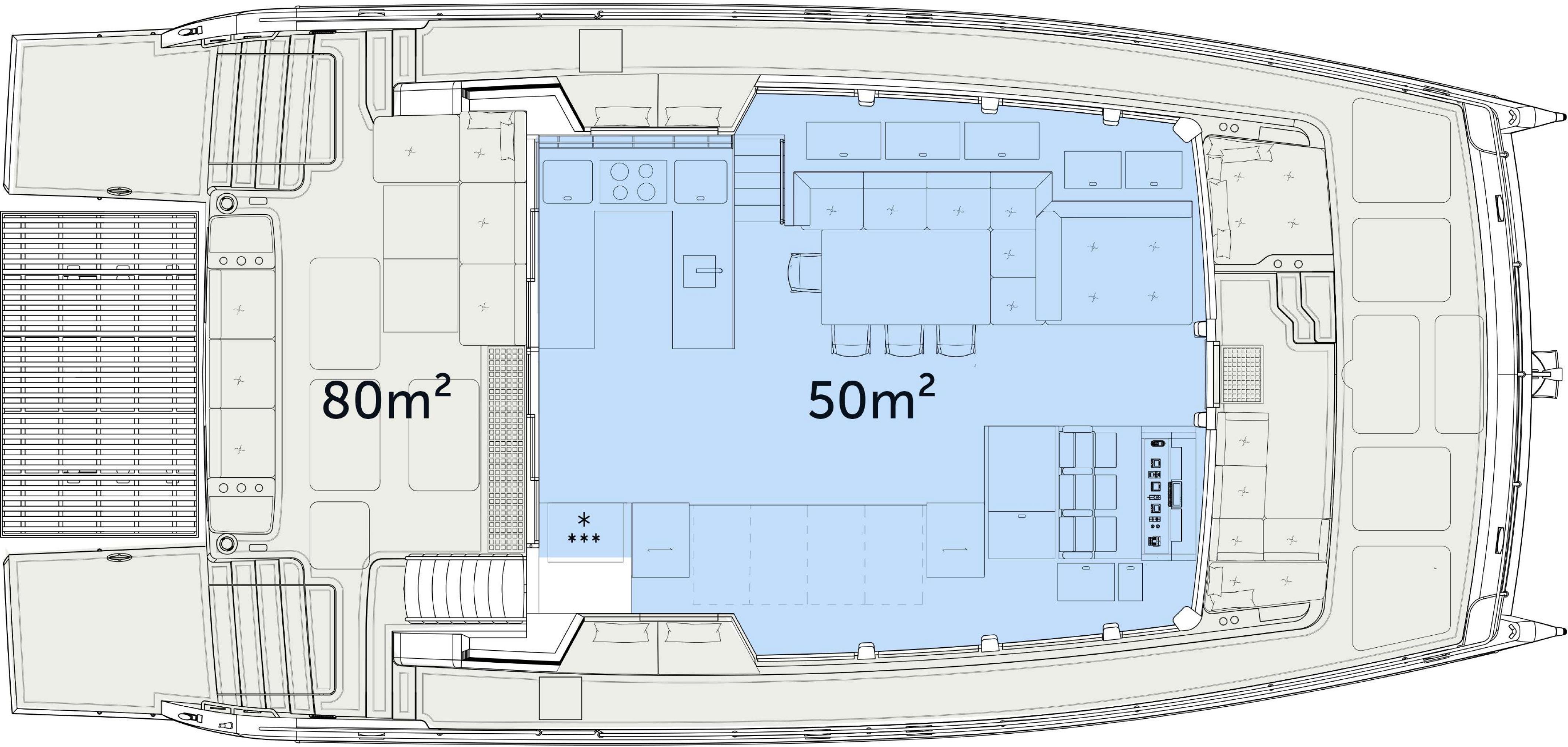


Lower deck
5 Cabins / 5 Bathrooms

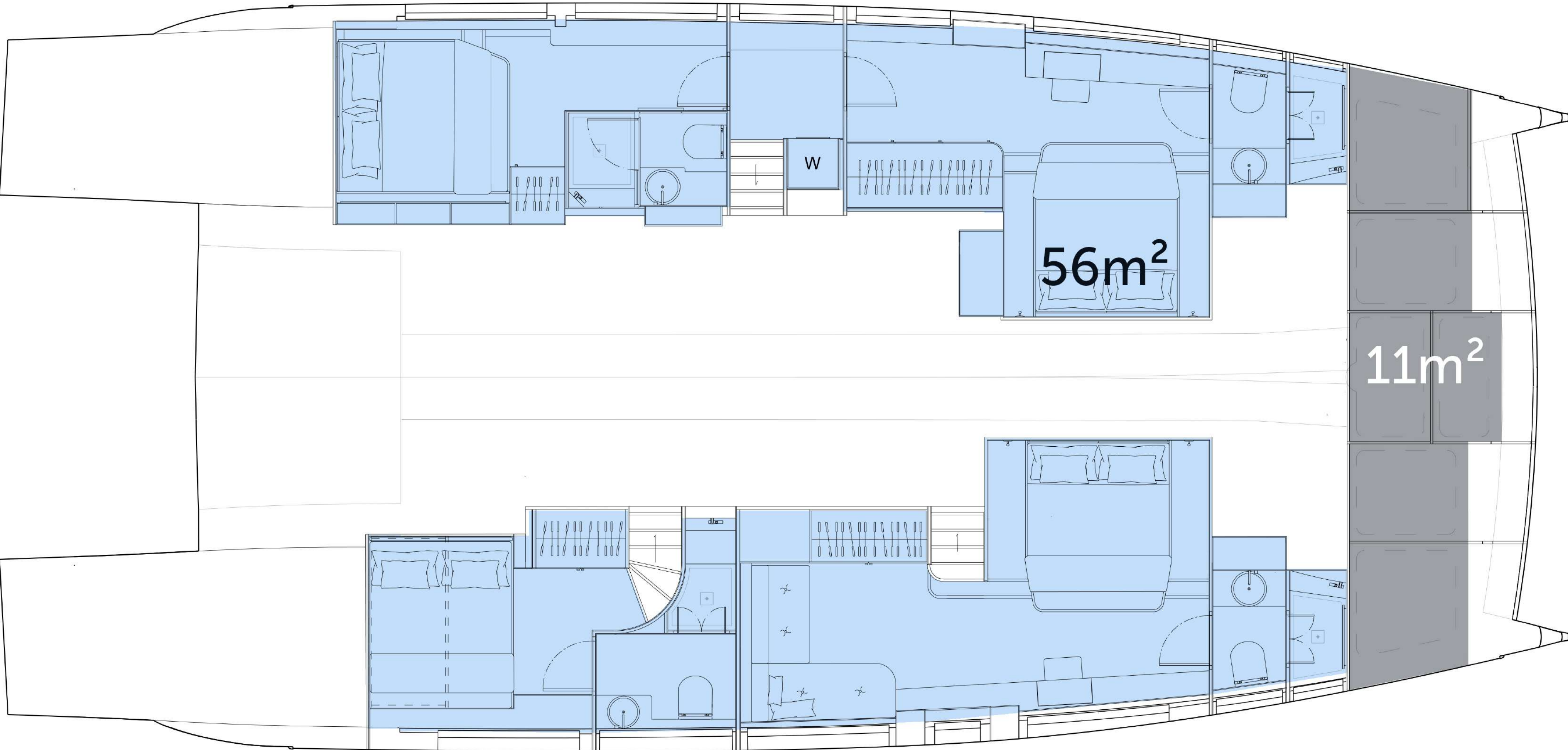


Lower deck
5+1 Cabins / 5 Bathrooms

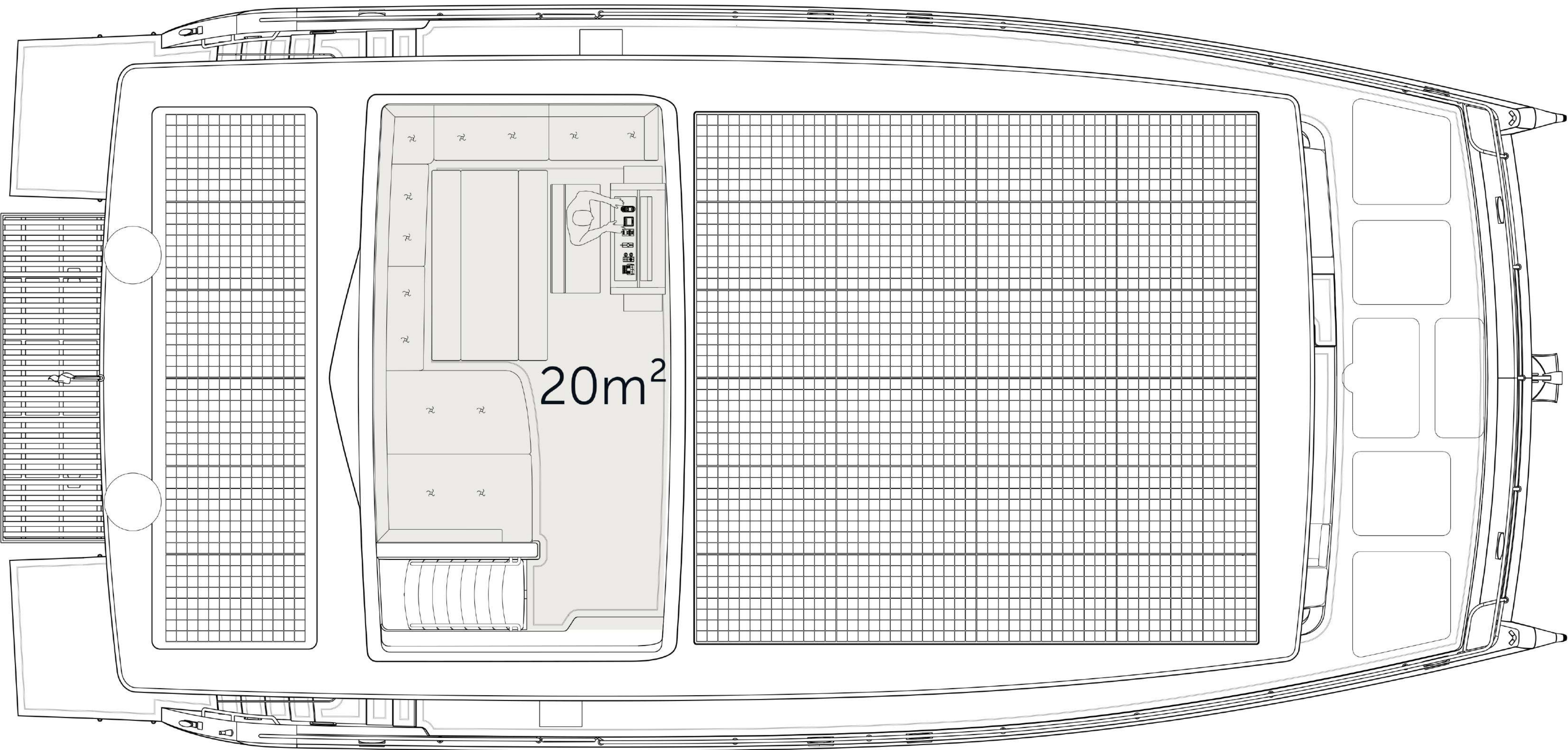
LIVING SPACE
FRONT EXIT



Main deck



Lower deck
4 Cabins / 4 Bathrooms



Flybridge



UNLIMITED
RANGE

ZERO
EMISSION

NOISELESS
CRUISING

VIRTUALLY NO
MAINTENANCE

SAFEST MARINE
PROPULSION SYSTEM

SILENT ASSURANCES



8 YEARS

WARRANTY
BATTERY BANKS

25 YEARS

WARRANTY
SOLAR PANELS

LIFETIME

WARRANTY
E-MOTORS

CE-A

CERTIFICATION

TRANS-OCEAN

OCEAN CROSSING
CAPABILITIES

CRUISER

2 x 50 kW
E-motors

143 kWh
Lithium battery

100 kW
Generator

6 ~ 8 kn
Cruising speed

The ideal entry into the world of solar powered noiseless cruising.

Two electric motors allow you to seamlessly glide towards the horizon providing high levels of comfort, making this option suitable for long term economic cruising.

Furthermore, the solar electric drivetrain features unprecedented levels of reliability and security with almost zero maintenance work needed.

E-POWER

2 x 200 kW
E-motors

207 kWh
Lithium battery

145 kW
Generator

6 ~ 8 kn
Cruising speed

The most powerful propulsion option combines the largest battery bank with the strongest electric motors available.

Higher speeds can be sustained for even longer periods of time while also maximizing the amount of energy which can be stored for back-up and deployed whenever needed.

Therefore, E-Power delivers the ultimate solar powered yachting experience.

E-POWER+

2 x 340 kW
E-motors

286 kWh
Lithium battery

145 kW
Generator

6 ~ 8 kn
Cruising speed

The most powerful propulsion option combines the largest battery bank with the strongest electric motors available.

Higher speeds can be sustained for even longer periods of time while also maximizing the amount of energy which can be stored for back-up and deployed whenever needed.

Therefore, E-Power+ delivers the ultimate solar powered yachting experience.



ADDITIONAL KITE SAIL SYSTEM

FULLY
AUTOMATIC
TOWING KITE

AVAILABLE FOR
ALL
OUR MODELS

DYNAMIC FLIGHT
PATTERN RESEMBLING A
FIGURE 8

UP TO 10x MORE POWER
PER m² COMPARED TO A
CONVENTIONAL SAIL

SILENT 60 EQUIPMENT

STANDARD FEATURES

4 Cabins: 1 full-width (20 m²) Master-cabin , 1 VIP-cabin, 2 generous guest cabins, with 1 double bed or 2 single beds each. All cabins with en-suite bathroom.

2 x 50 kW e-motors on shafts, 143 kWh lithium battery, 100 kW diesel generator.

Electro-hydraulic steering and controls for 2 motors at the helm positions.

Side-by-side fridge/freezer with ice maker and chilled water.

Navigation instruments: 4 monitors 9" with world basemap, 4 G broadband radar, electronic compass, autopilot incl. controller and pump, rudder feedback, AIS class B, 2 set of VHF radio, antennas, depth sounder, weather station + 2x AP control unit.

High efficiency air conditioning system.

High pressure water maker producing 95 L / h.

Rigid sunroof over flybridge.

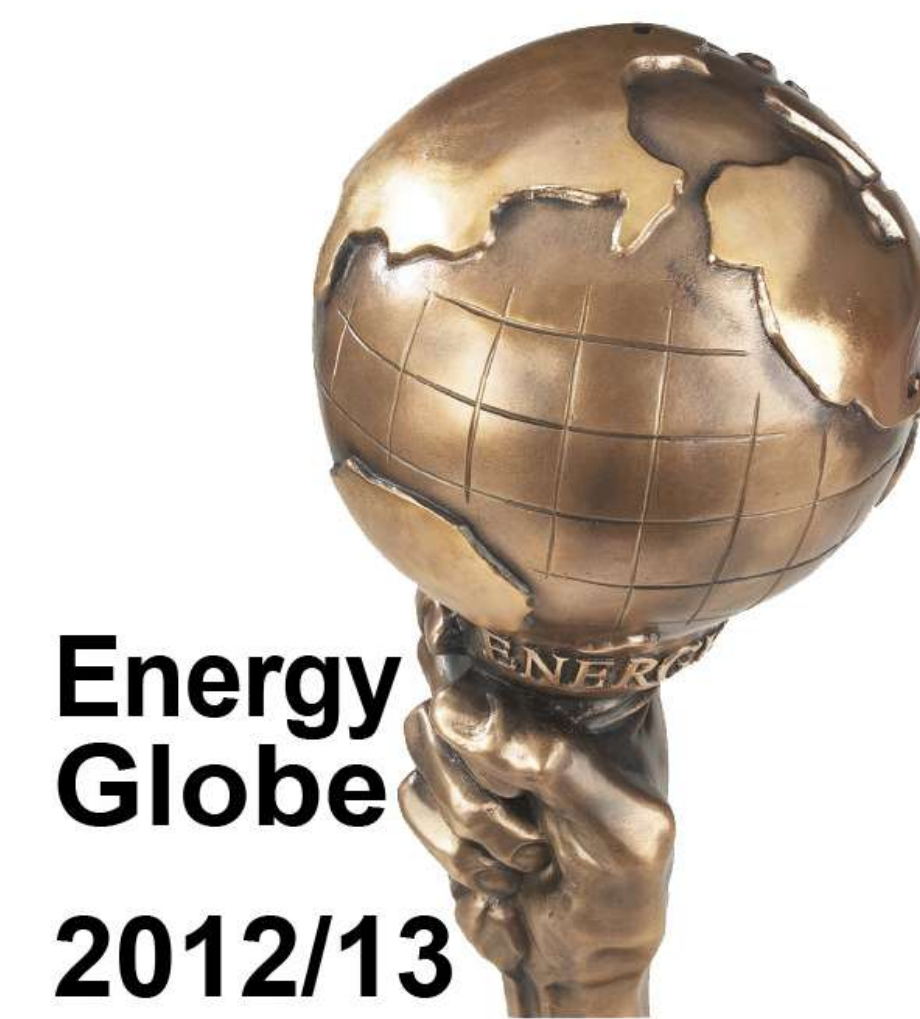
OPTIONAL FEATURES

Front exit and front cockpit.

Hydraulic stern-platform serves as a tender-lift and as a swimming platform.

Retractable sunroof incl. hydraulic lifting system, control switches + remote control.

SILENT



Multi-Award Winning Design & Engineering
sales@silent-yachts.com | www.silent-yachts.com