

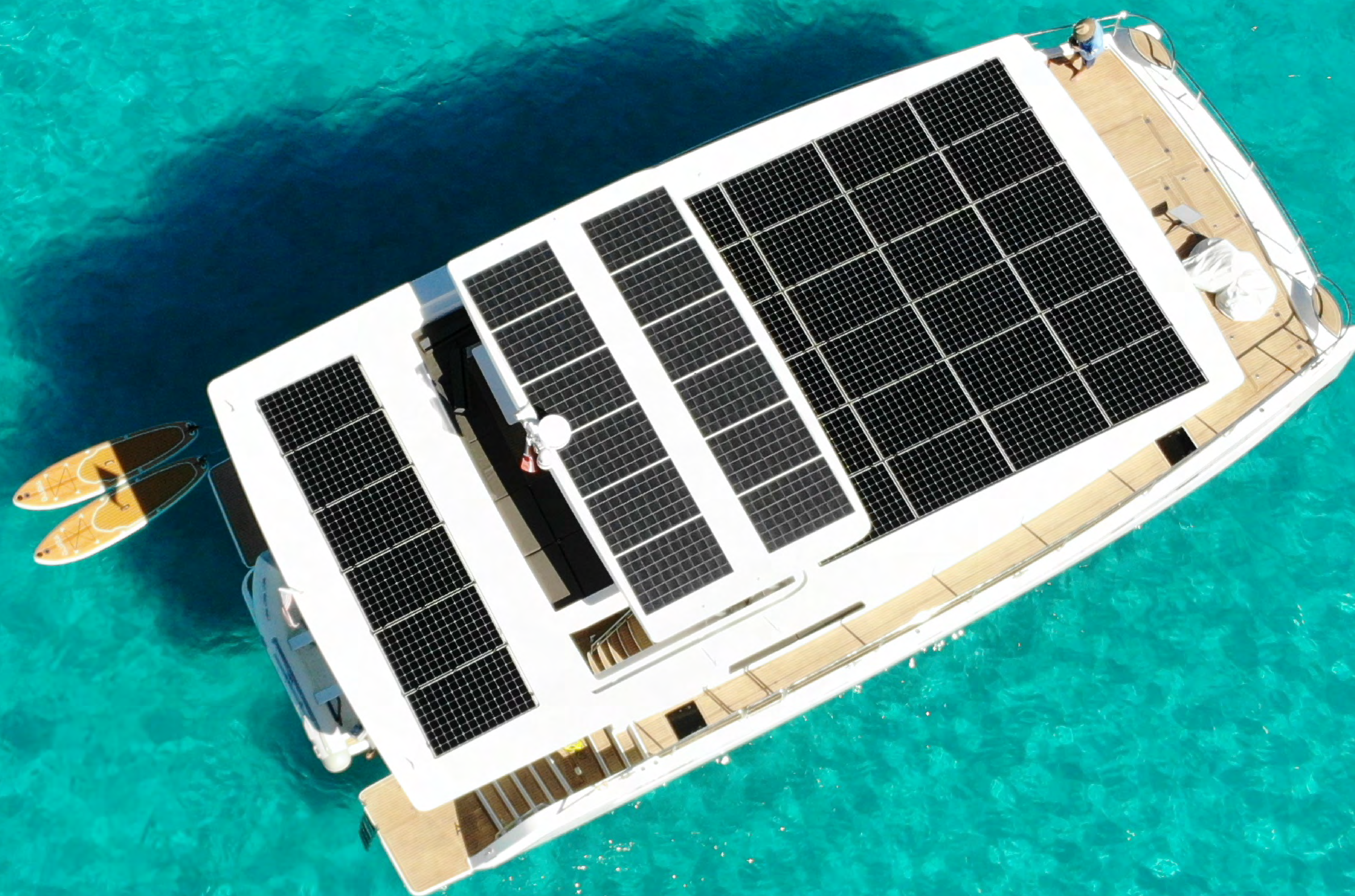
Silent 62

3-Deck



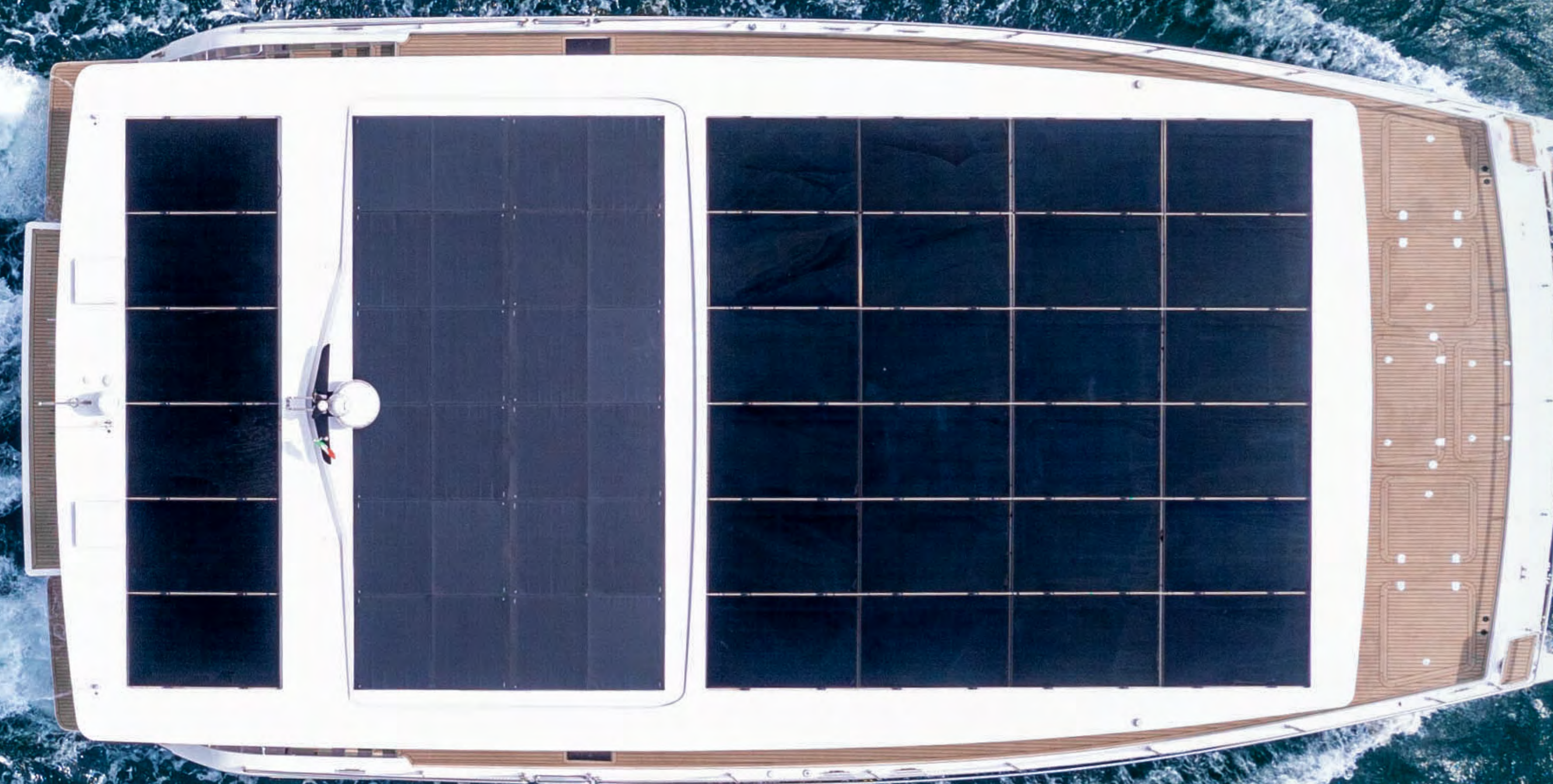
SILENT

1-3	Introduction
4	Silent 62 3-Deck
5	Specifications
6	Silent 62 3-Deck open version
7-8	Exterior open
9-13	Fly deck open
14-16	Floor plans & living space
17	Silent 62 3-Deck closed version
18-20	Exterior closed
21-23	Fly deck closed
24-26	Floor plans & living space
27-35	Main deck (open & closed)
36-42	Lower deck (open & closed)
43	Silent advantages
44	Silent assurances
45-47	Propulsion options
48	Kite sail system
49	Specifications & options

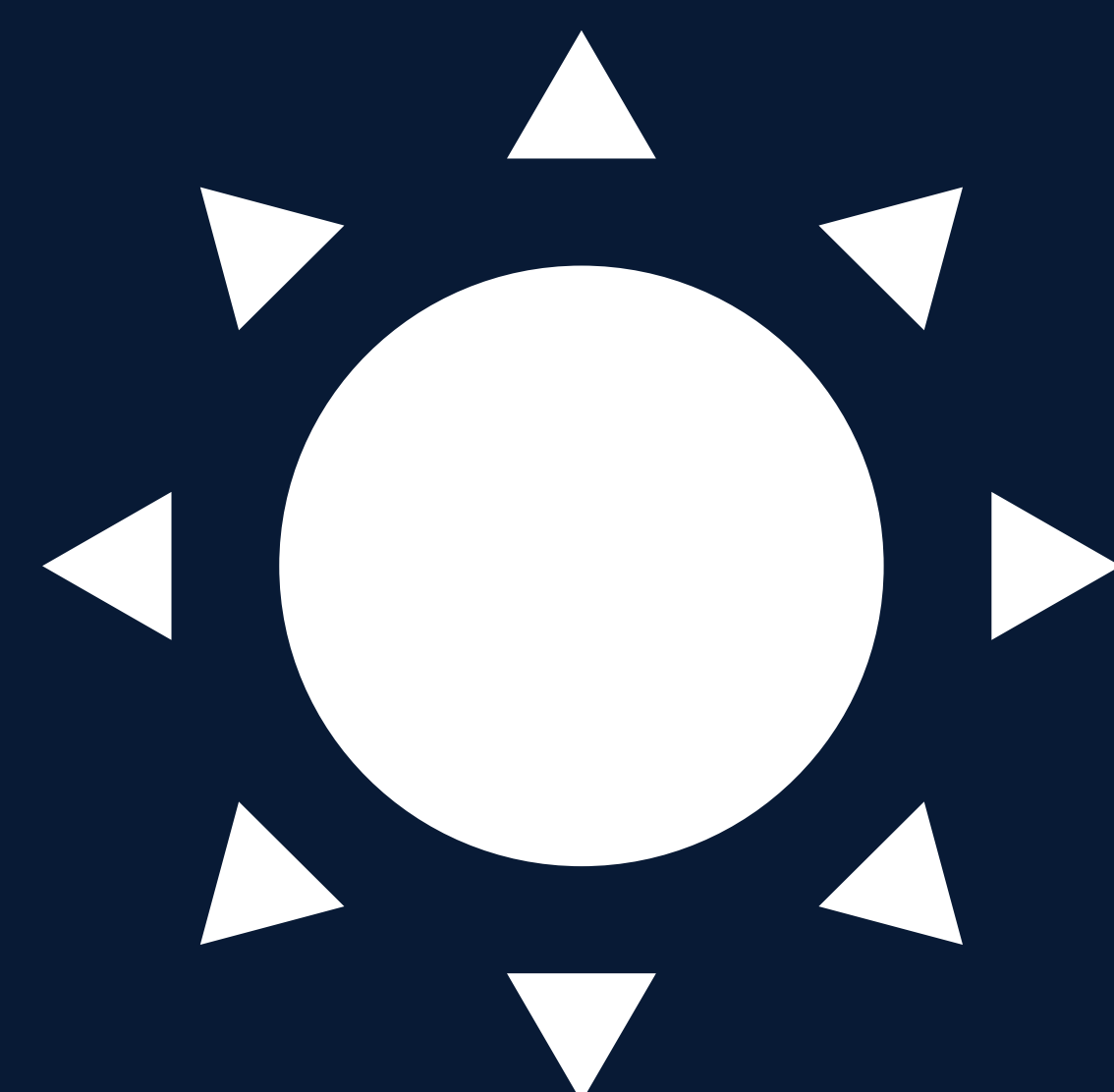


Create an independent and environmentally friendly yachting experience
which combines the silent cruising of a sailboat
with the luxury of a motor yacht.

THE FUTURE OF YACHTING IS SOLAR



Embrace the sound of silence.
Preserve the purity of the ocean.
Experience unprecedented levels of tranquility and pleasure.



SOLAR POWER

for propulsion as well as all navigation, household & comfort appliances on board.



WORLD RECORD

2018 - Silent 64 first ever solar powered production yacht to cross the Atlantic ocean.



AWARD WINNING

technology 17x awards won honoring our drive for innovation since 2009.



Silent 62

3-Deck

SPECIFICATIONS



19 m (62 ft)	Length overall
8.99 m (29.5 ft)	Beam overall
0.93 m (3.9 ft)	Draft
39 tons	Light displacement
900 L to 2200 L	Water
1000 L	Wastewater
1000 L to 1900 L	Fuel
17 kWp	Solar panels
CE-A	Certification
Trans-Ocean	Range

Based on our bestselling Silent 60, it offers an additional third deck instead of the regular flybridge, while also increasing the overall length of the hull by two feet.

A fascinating combination of the superyacht flair of our flagship, the Silent 80 3-Deck, with the compact dimensions of our Silent 60. This creates a unique proposal by truly merging the best of both worlds. The third deck is available in three different versions: an open skylounge, a closed skylounge as well a closed owner's suite variation.

Furthermore, all version are available with a Front Exit on the main deck, which allows guests to directly step onto the bow through the salon.

Open version

Silent 62

3-Deck

EXTERIOR
OPEN



EXTERIOR
OPEN



FLY DECK
OPEN SKY LOUNGE 1



FLY DECK
OPEN SKY LOUNGE 1



FLY DECK
OPEN SKY LOUNGE 1



FLY DECK
OPEN SKY LOUNGE 2

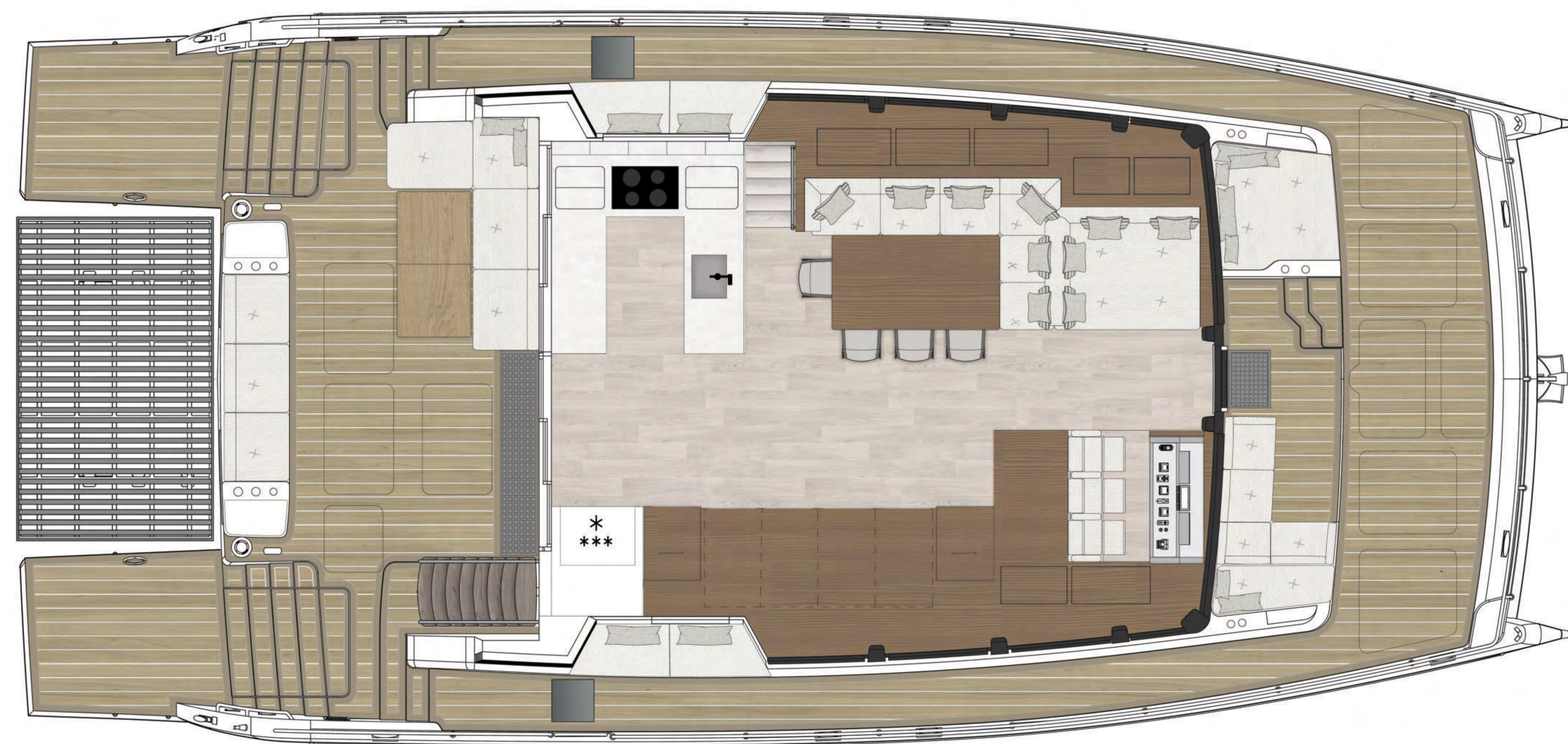


FLY DECK
OPEN SKY LOUNGE 2

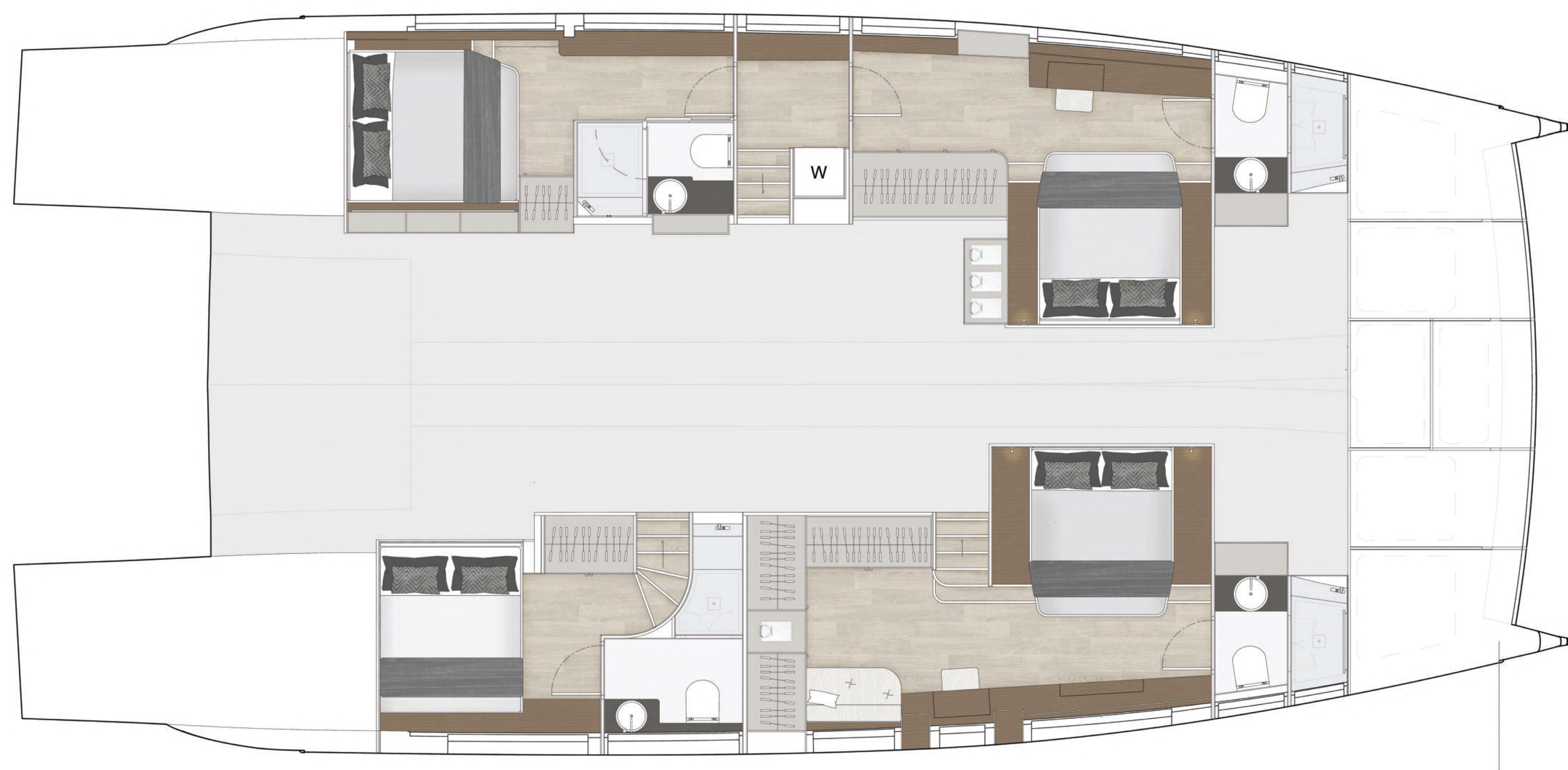


FLOOR PLANS

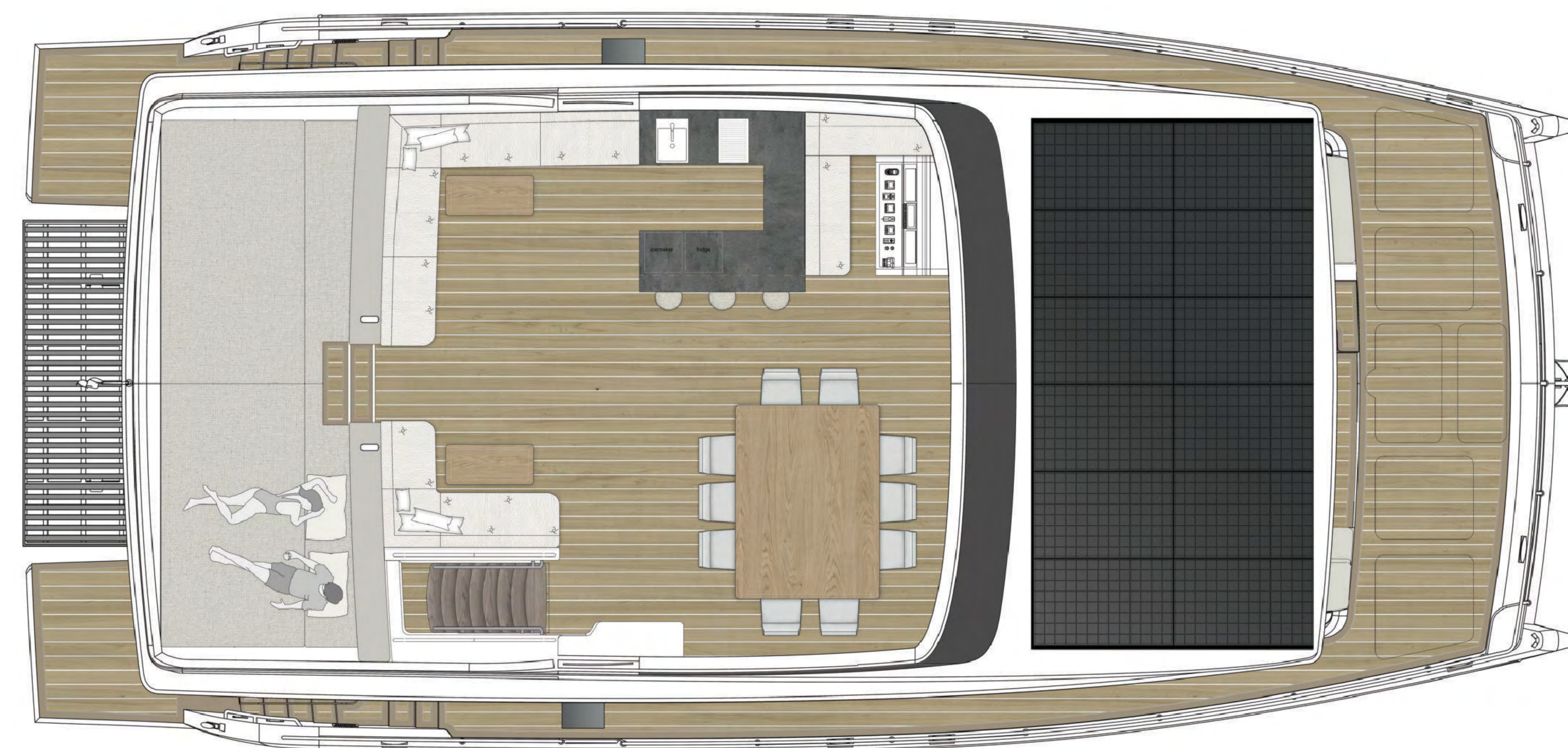
OPEN SKY LOUNGE - FRONT EXIT



Main deck



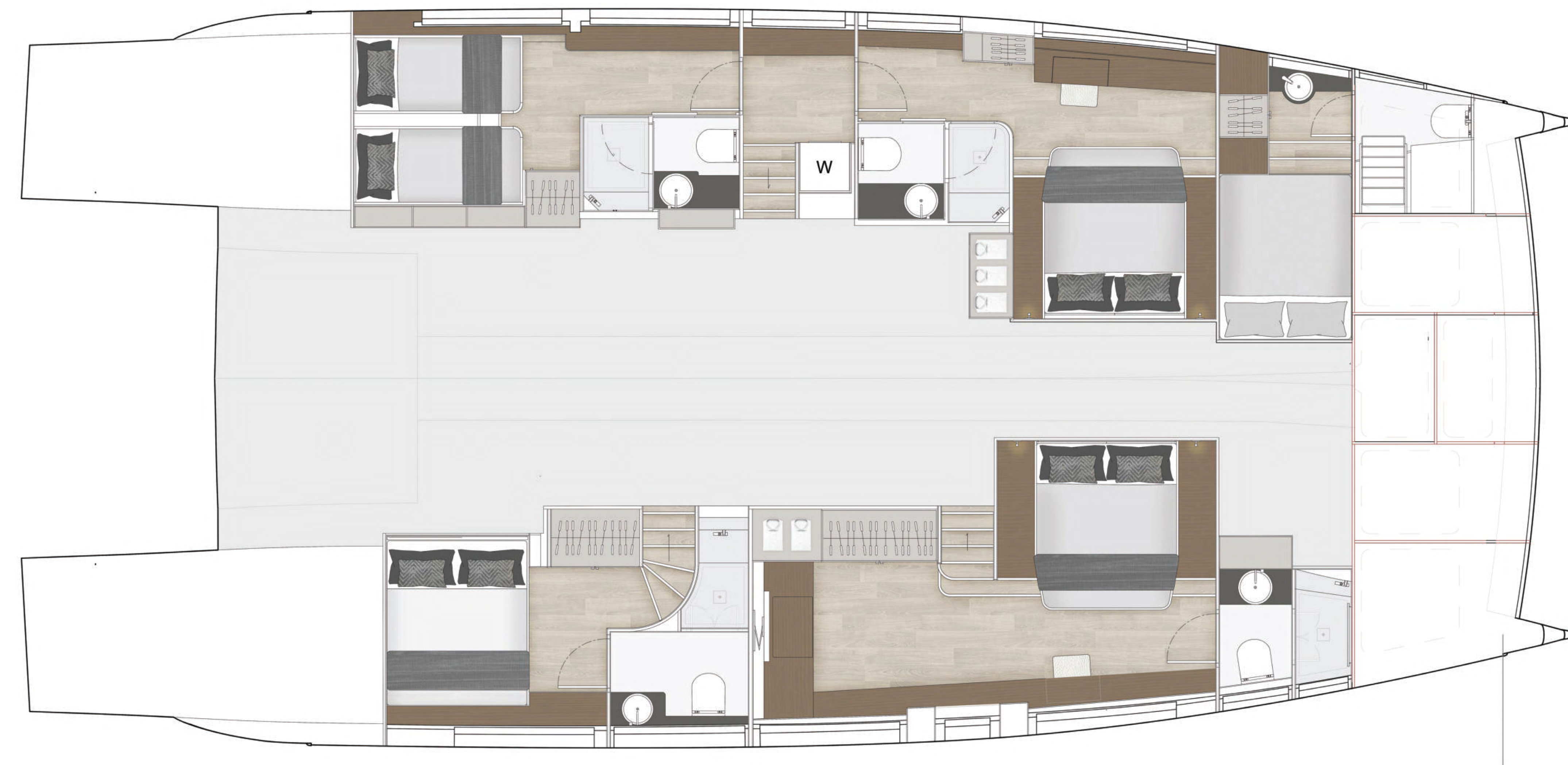
Lower deck
4 Cabins / 4 Bathrooms



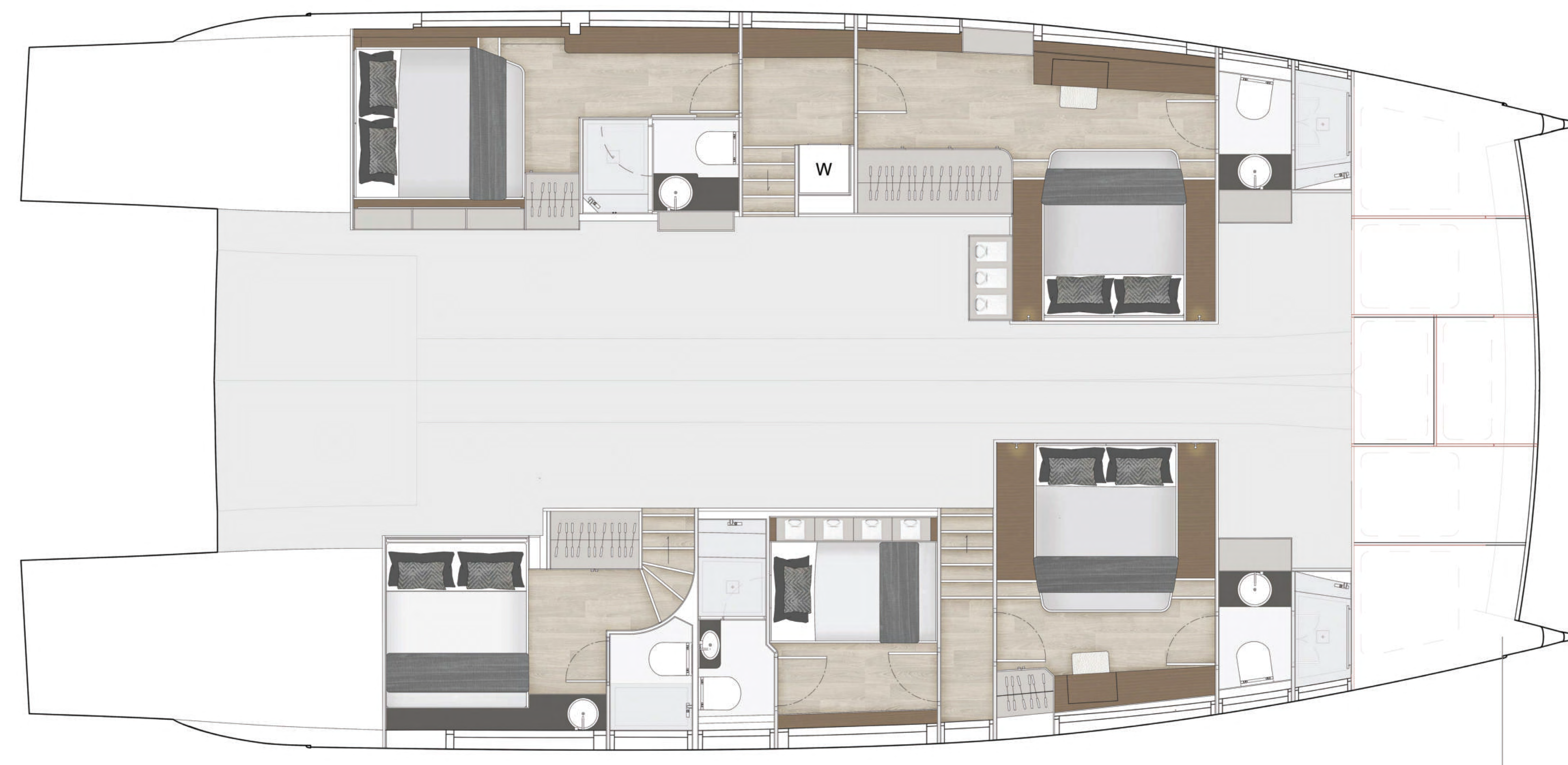
Fly deck

FLOOR PLANS

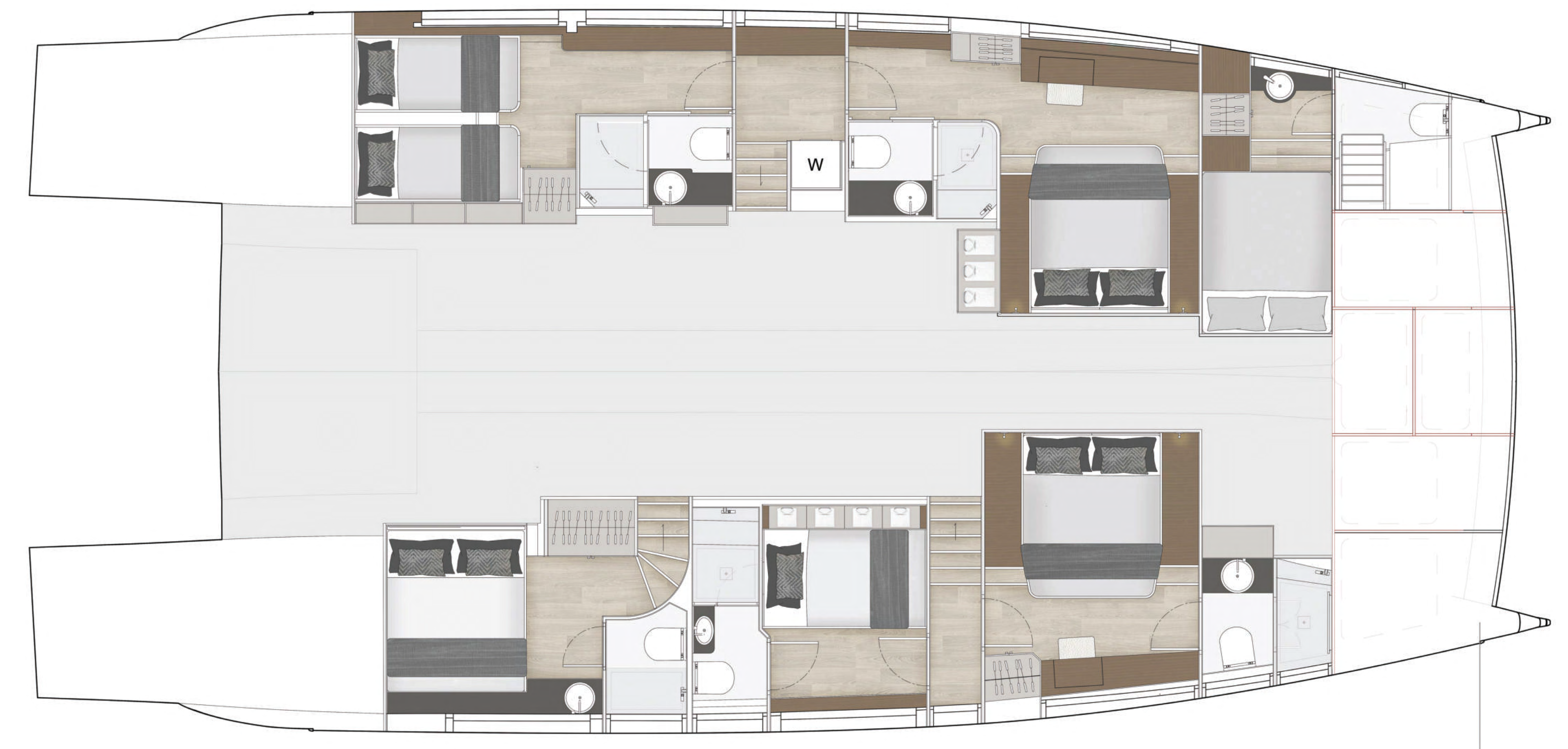
CABIN VARIATIONS - FRONT EXIT



Lower Deck
4+1 Cabins / 4 Bathrooms



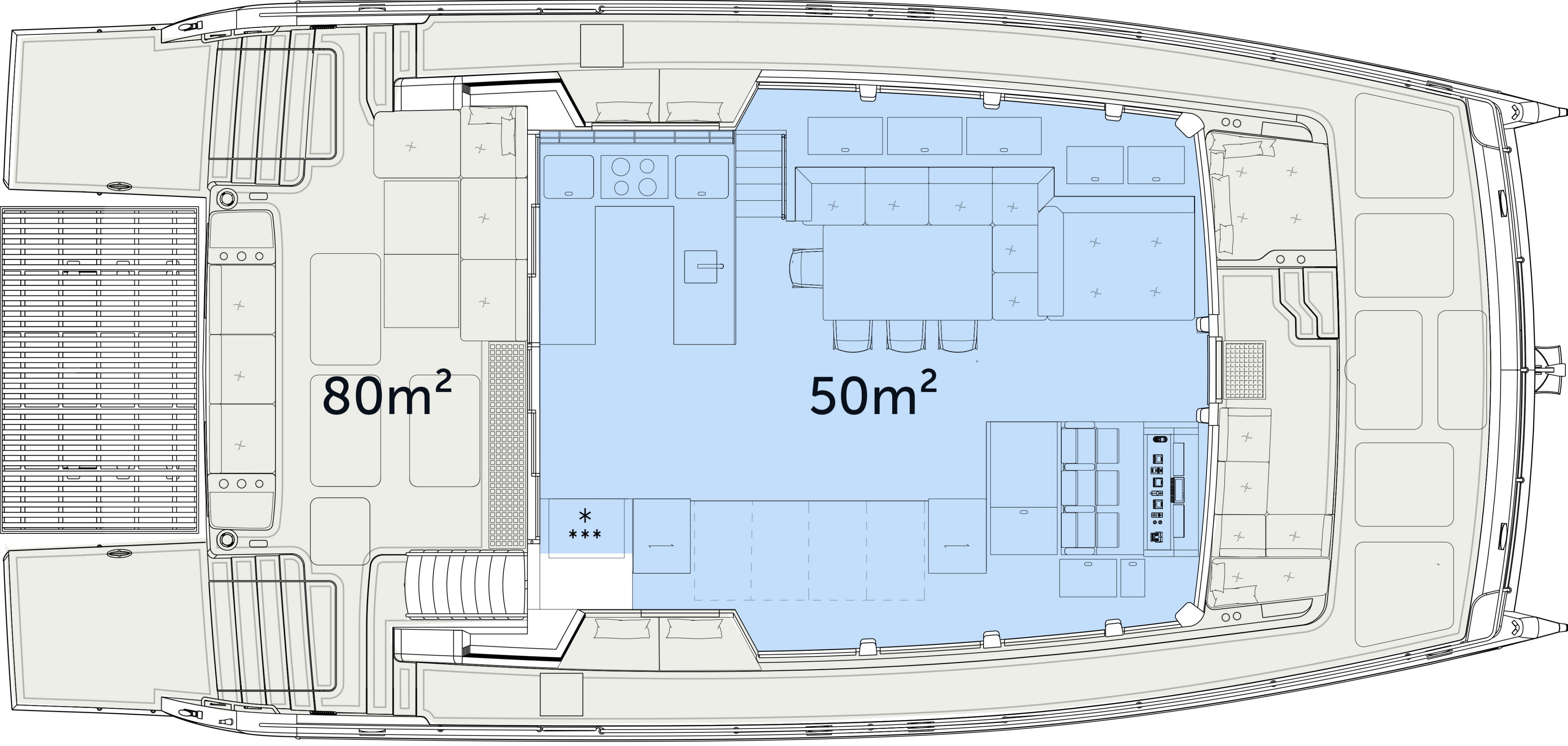
Lower Deck
5 Cabins / 5 Bathrooms



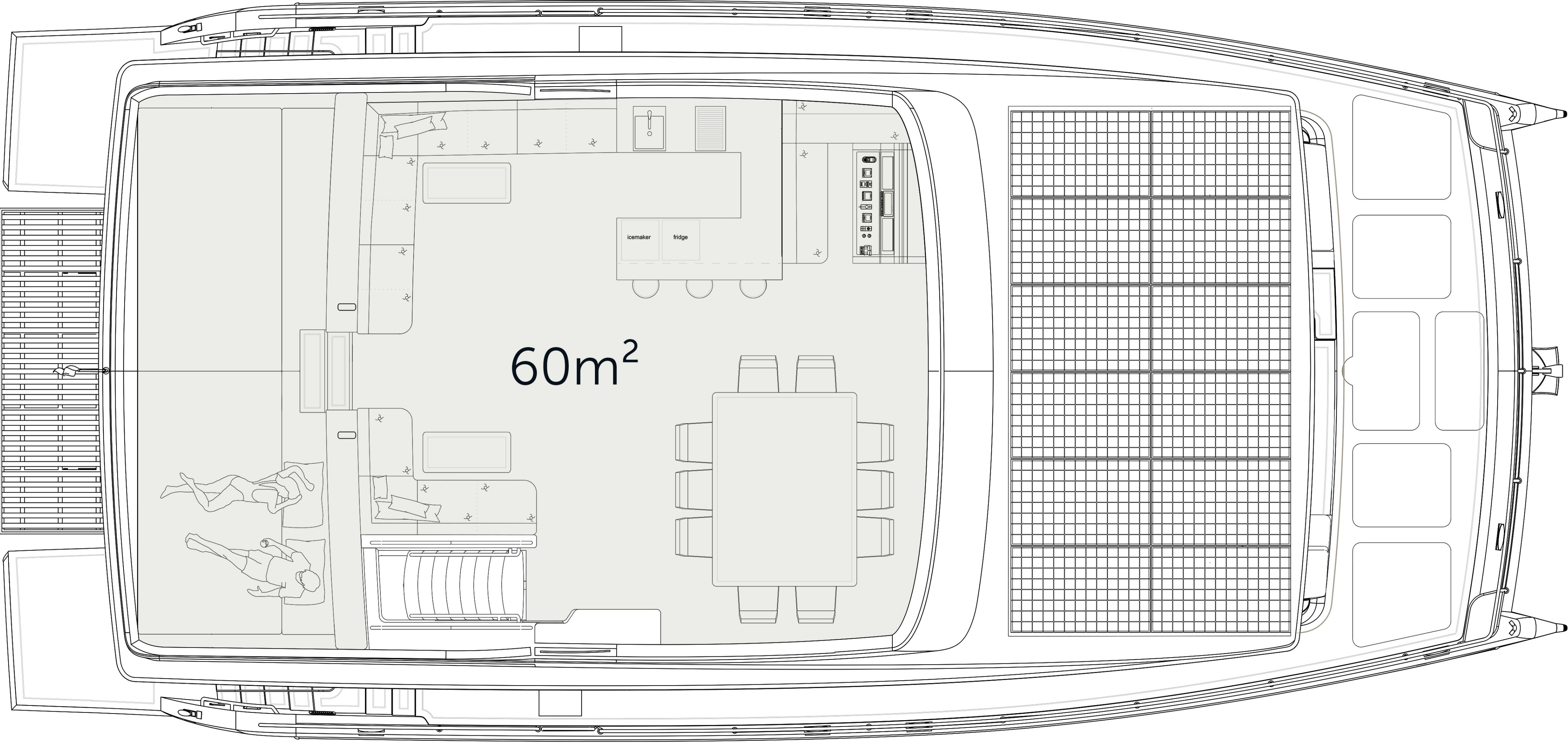
Lower Deck
5+1 Cabins / 5 Bathrooms

LIVING SPACE

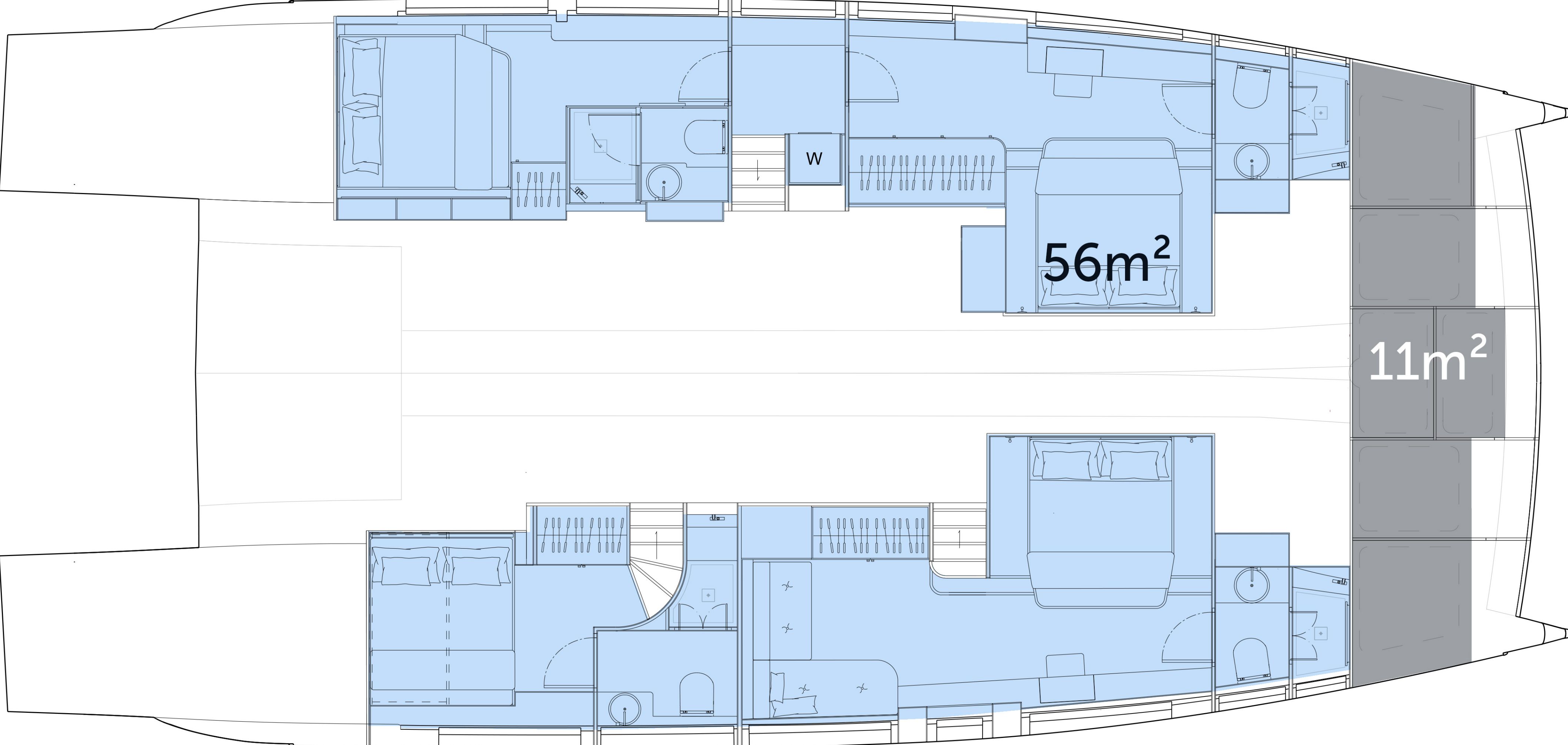
OPEN SKY LOUNGE - FRONT EXIT



Main deck



Fly deck



Lower deck
4 Cabins / 4 Bathrooms

Based on our bestselling Silent 60, it offers an additional third deck instead of the regular flybridge, while also increasing the overall length of the hull by two feet.

The closed version of the Silent 62 3-Deck establishes her character as a truly compact superyacht even further. Hereby, the closed third deck is available in two formidable options. A choice between a closed sky lounge or an exclusive owner's suite on the fly deck makes sure she can be customized towards your specific needs. Either way, the ambiance onboard is unmatched within her class.

Closed version

Silent 62

3-Deck

EXTERIOR
CLOSED



EXTERIOR
CLOSED



EXTERIOR
CLOSED





FLY DECK
CLOSED OWNER'S SUITE

Owner's suite



Owner's bath

FLY DECK
CLOSED OWNER'S SUITE

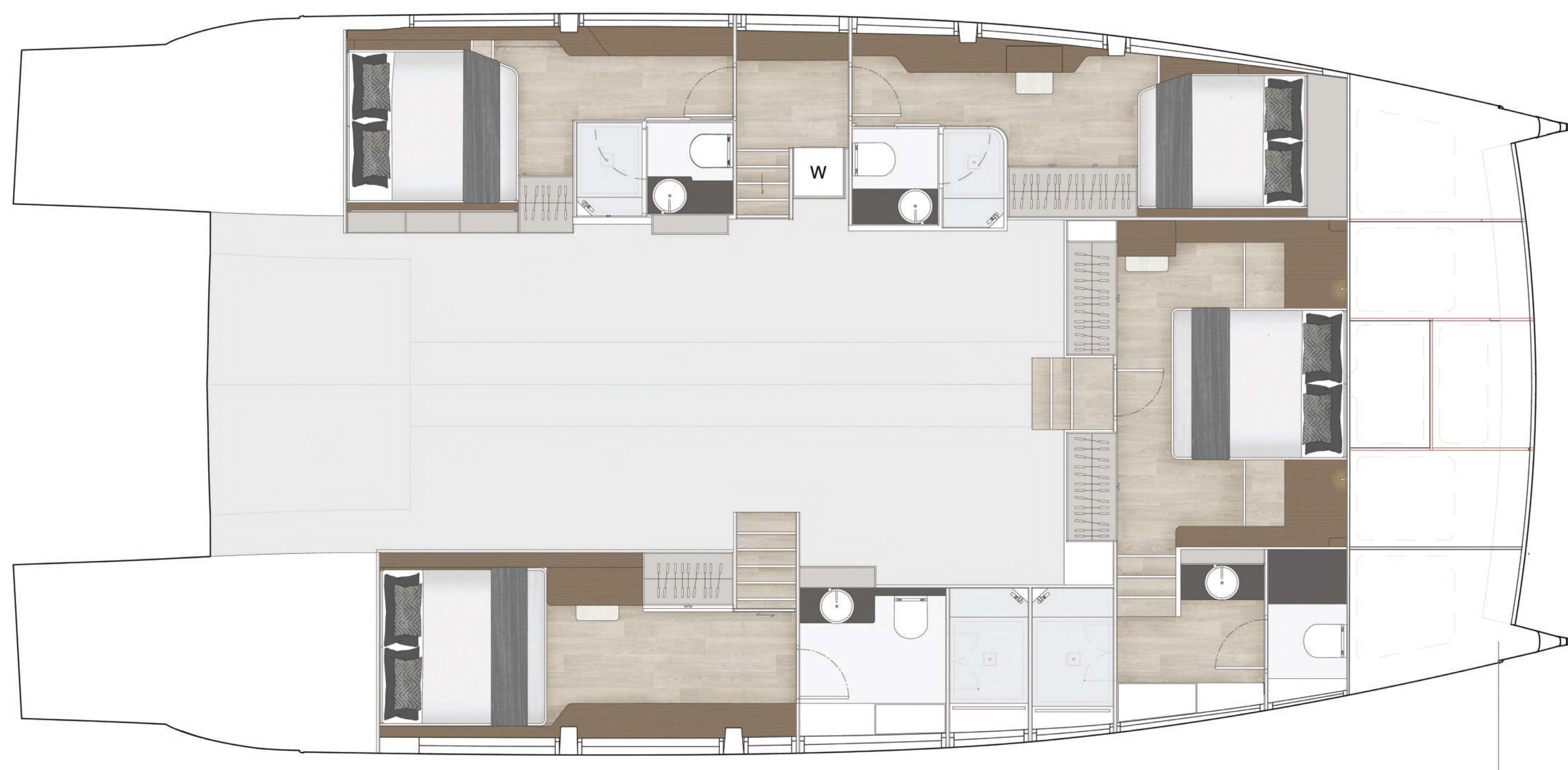
Terrace

FLOOR PLANS

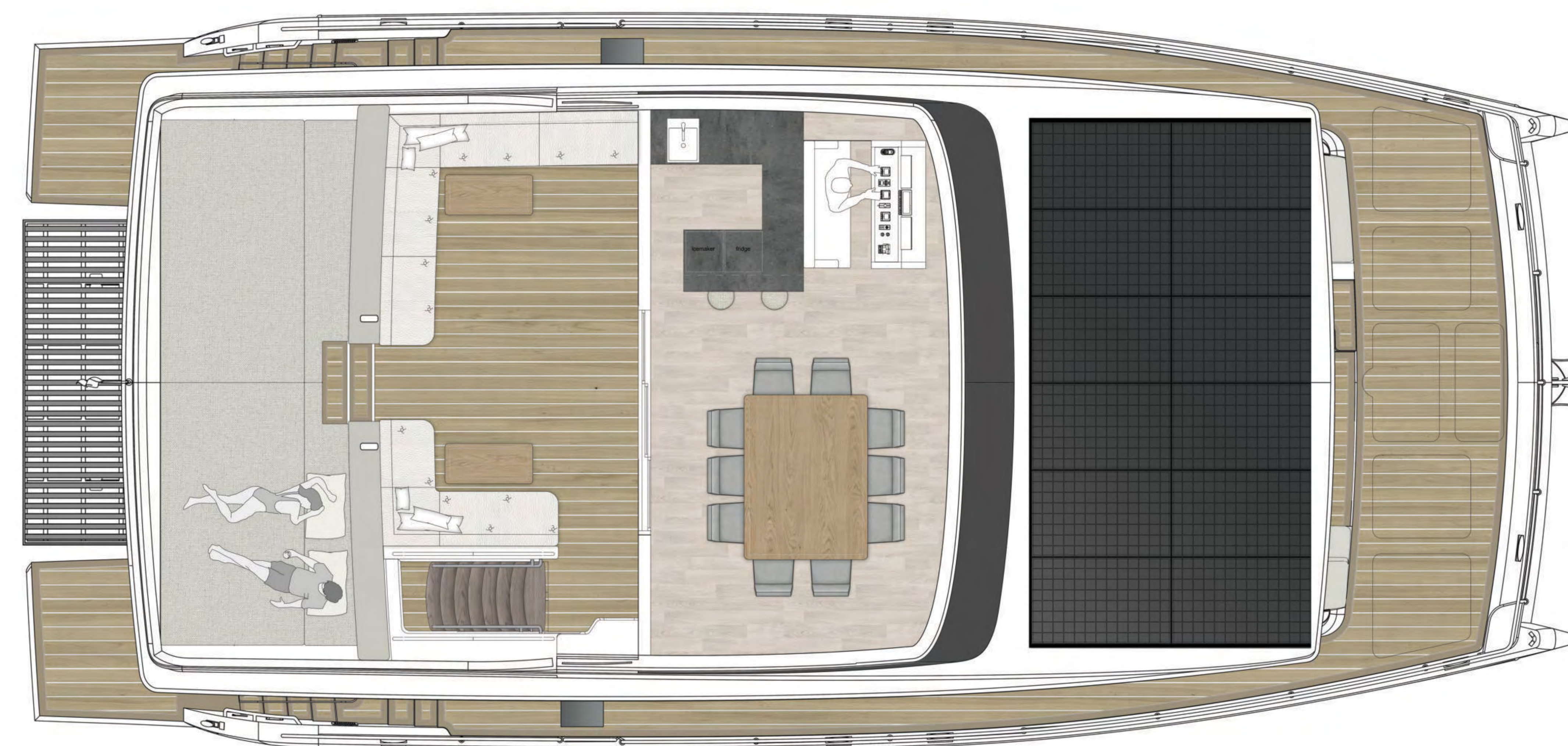
CLOSED SKY LOUNGE - FRONT MASTER



Main deck



Lower deck
4 Cabins / 4 Bathrooms



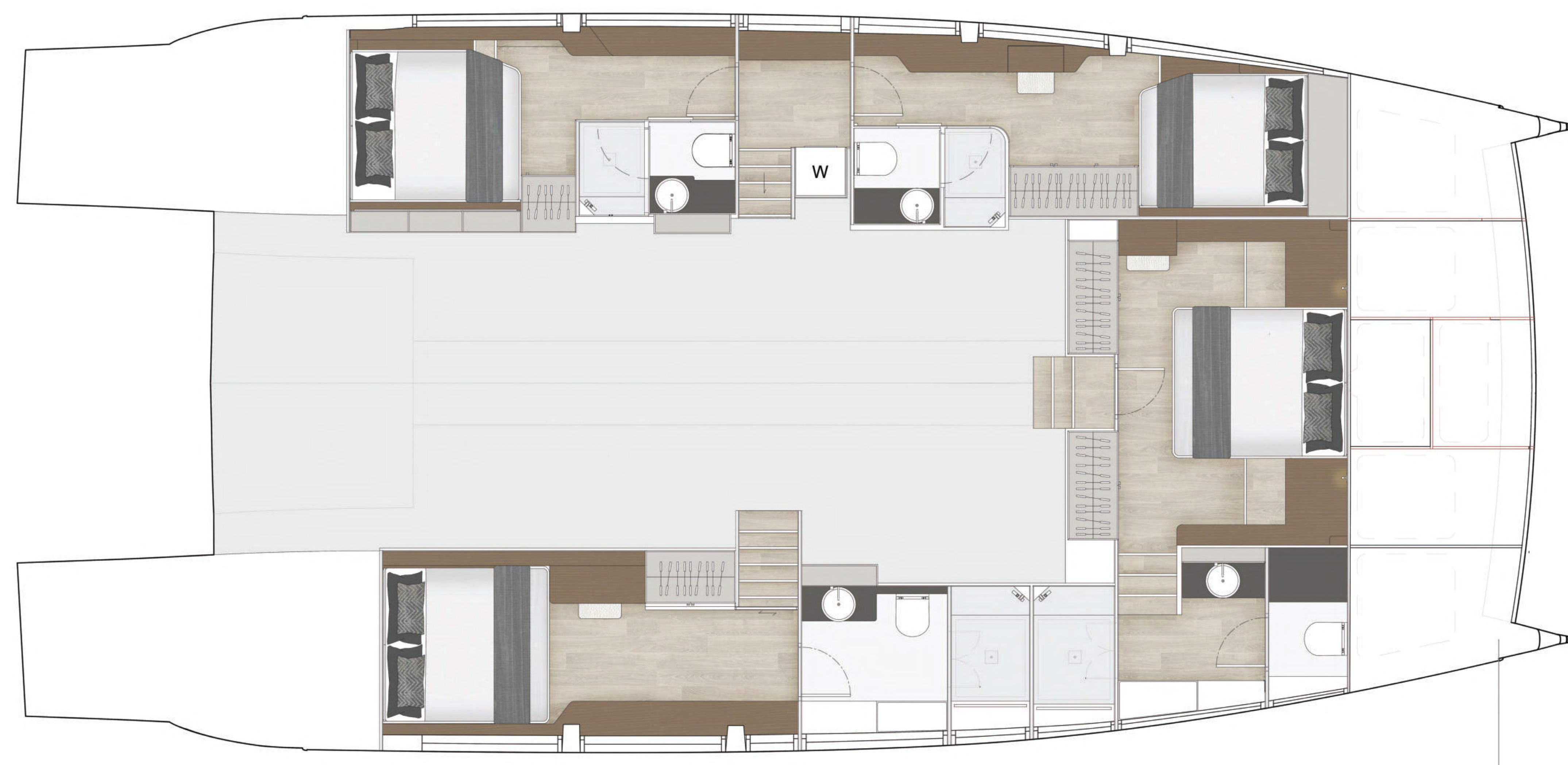
Fly deck

FLOOR PLANS

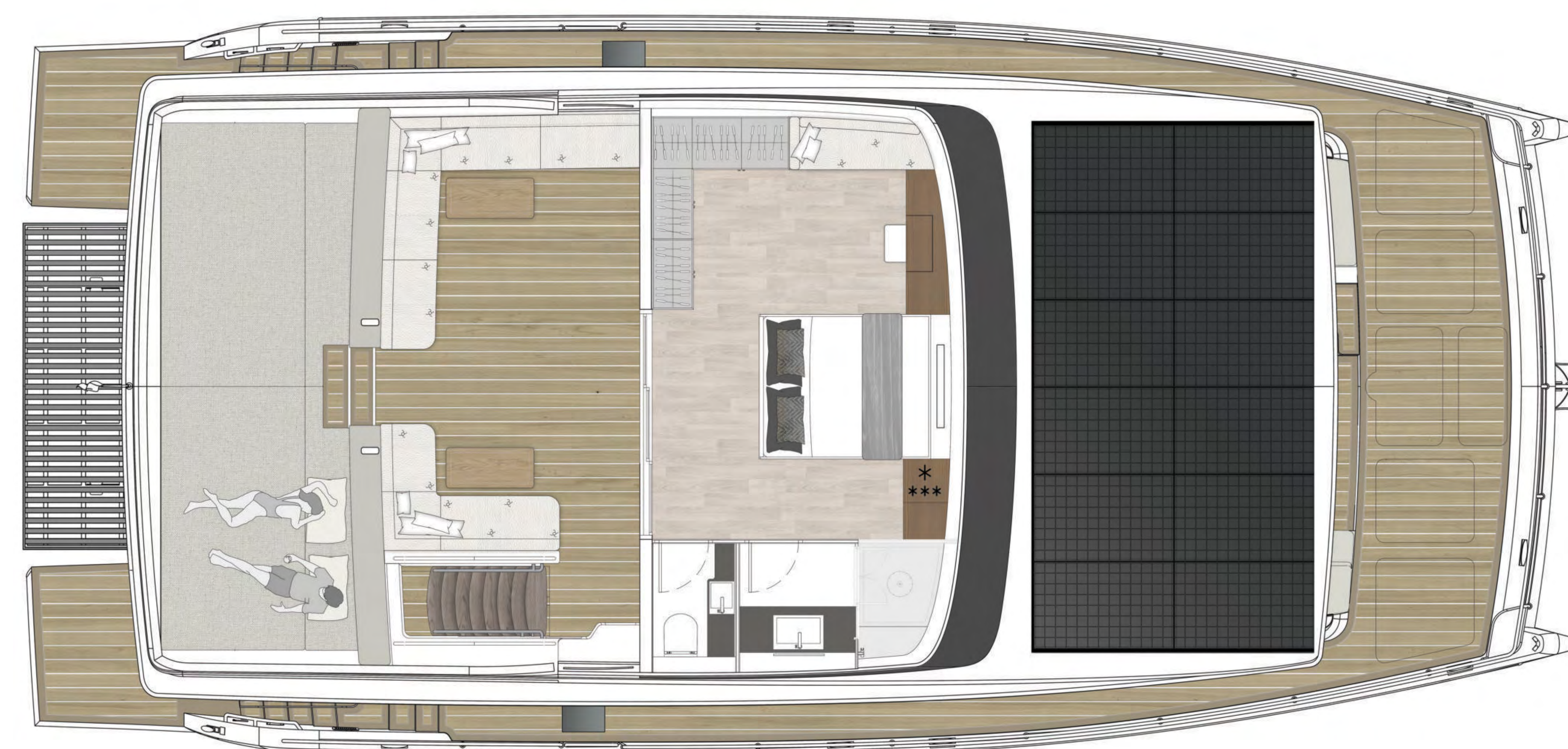
CLOSED OWNER'S SUITE - FRONT MASTER



Main deck



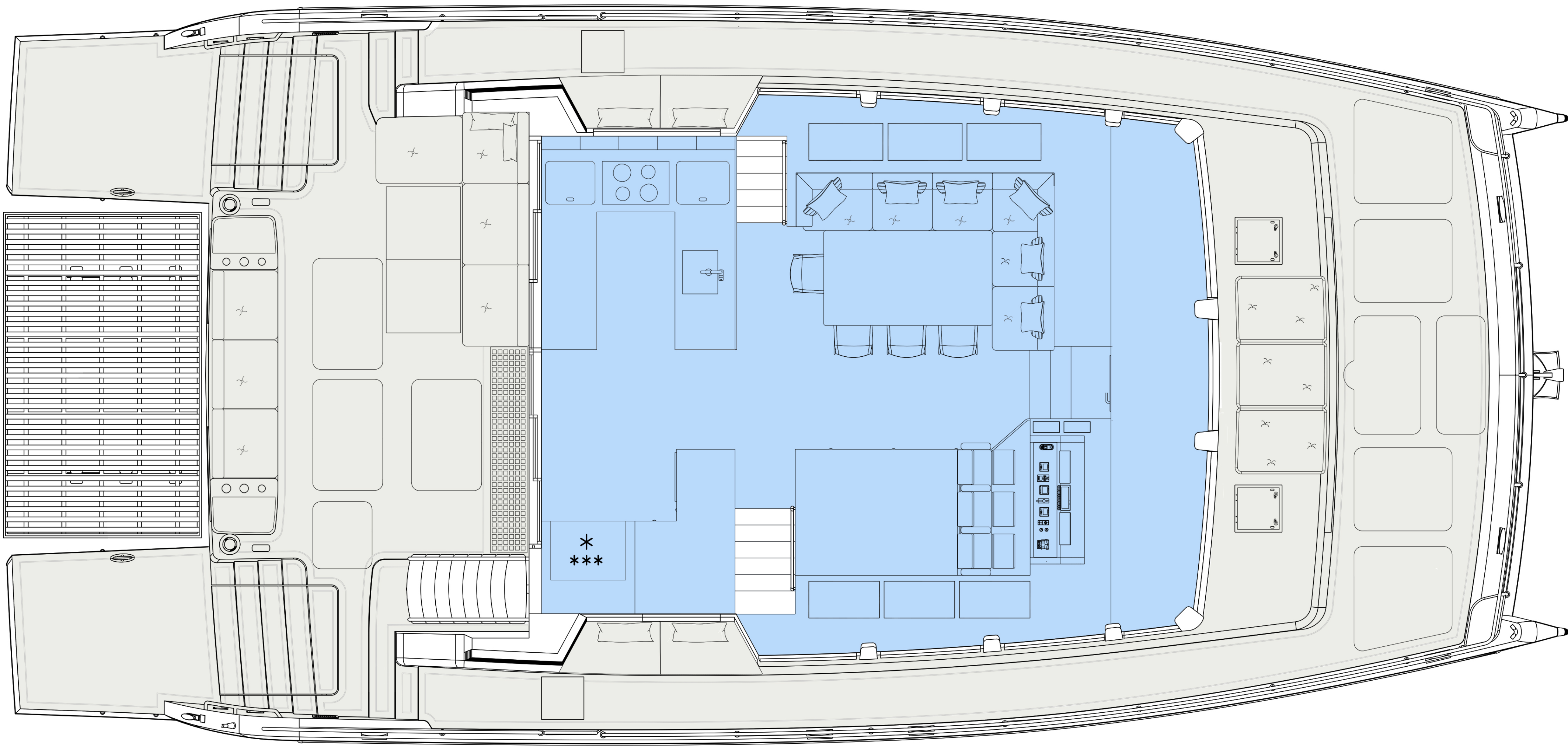
Lower deck
4 Cabins / 4 Bathrooms



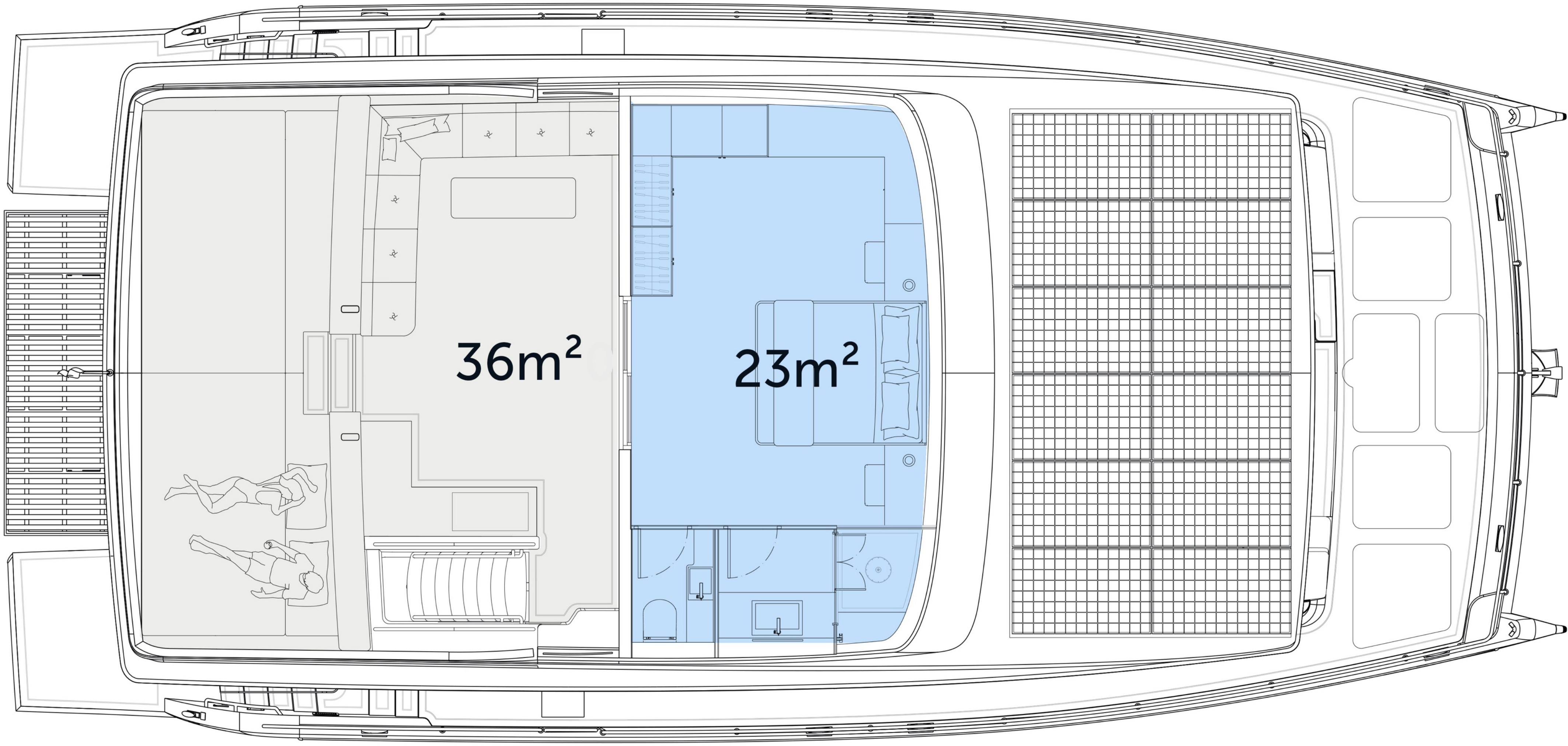
Fly deck

LIVING SPACE

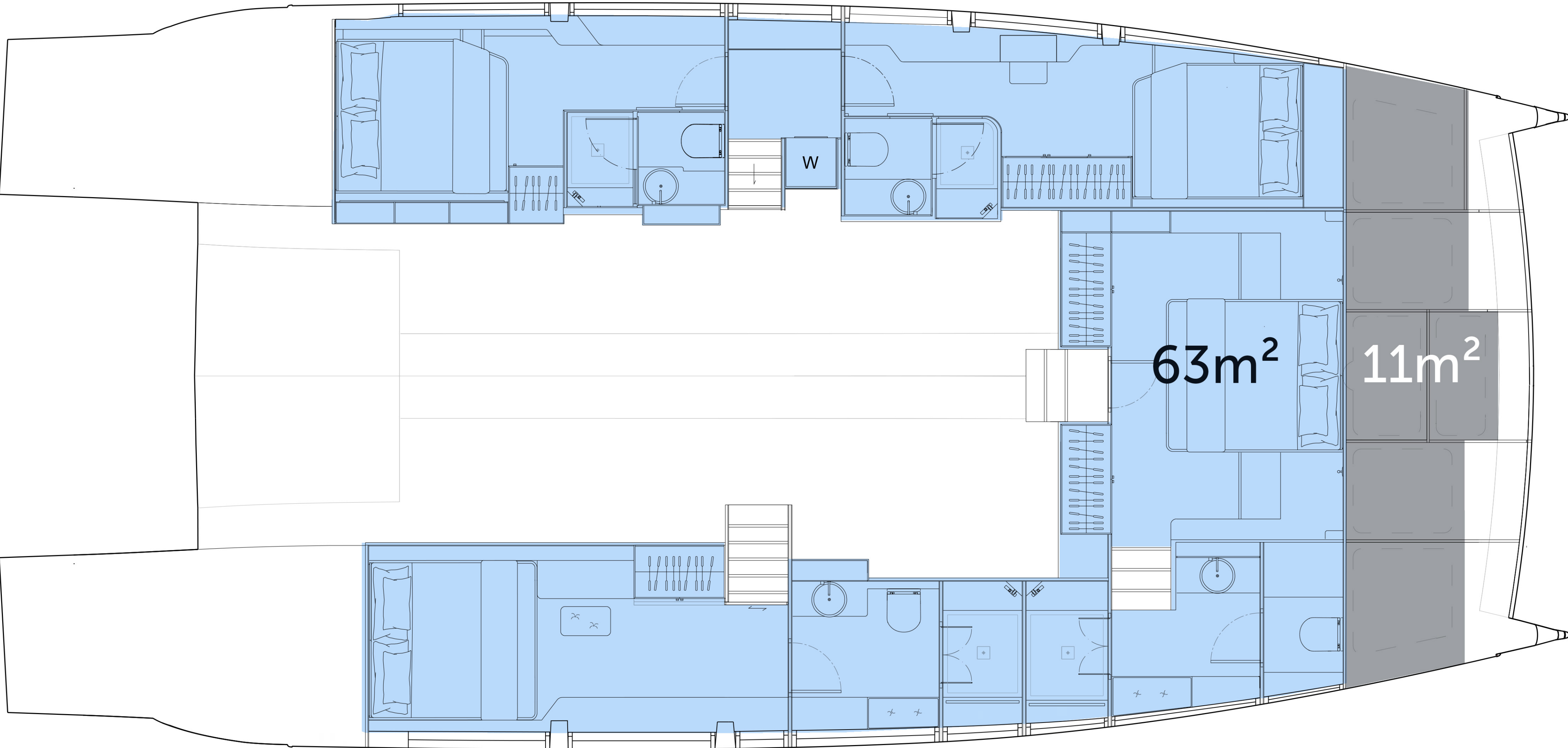
CLOSED OWNER'S SUITE - FRONT MASTER



Main deck



Fly deck



Lower deck
4 Cabins / 4 Bathrooms

MAIN DECK

Cockpit

MAIN DECK



Sidewalk

MAIN DECK
FRONT EXIT

Bow

MAIN DECK
FRONT MASTER



Salon

MAIN DECK
FRONT MASTER



Salon

MAIN DECK
FRONT MASTER



Galley



Salon

MAIN DECK
FRONT EXIT

Salon



Galley

LOWER DECK
FRONT MASTER

Master cabin

LOWER DECK
FRONT MASTER



Master cabin

LOWER DECK
FRONT MASTER



Master cabin

LOWER DECK
FRONT EXIT

Master cabin

LOWER DECK
FRONT EXIT

Master cabin

LOWER DECK
FRONT EXIT

Master cabin

LOWER DECK
FRONT EXIT



Master bath



UNLIMITED
RANGE

ZERO
EMISSION

NOISELESS
CRUISING

VIRTUALLY NO
MAINTENANCE

SAFEST MARINE
PROPULSION SYSTEM



8 YEARS

WARRANTY
BATTERY BANKS

25 YEARS

WARRANTY
SOLAR PANELS

LIFETIME

WARRANTY
E-MOTORS

CE-A

CERTIFICATION

TRANS-OCEAN

OCEAN CROSSING
CAPABILITIES

CRUISER

2 x 50 kW
E-motors

143 kWh
Lithium battery

100 kW
Generator

6 ~ 8 kn
Cruising speed

The ideal entry into the world of solar powered noiseless cruising.

Two electric motors allow you to seamlessly glide towards the horizon providing high levels of comfort, making this option suitable for long term economic cruising.

Furthermore, the solar electric drivetrain features unprecedented levels of reliability and security with almost zero maintenance work needed.

E-POWER

2 x 200 kW
E-motors

207 kWh
Lithium battery

145 kW
Generator

6 ~ 8 kn
Cruising speed

The most powerful propulsion option combines the largest battery bank with the strongest electric motors available.

Higher speeds can be sustained for even longer periods of time while also maximizing the amount of energy which can be stored for back-up and deployed whenever needed.

Therefore, E-Power delivers the ultimate solar powered yachting experience.

E-POWER+

2 x 340 kW

E-motors

268 kWh

Lithium battery

2 x 145 kW

Generator

6 ~ 8 kn

Cruising speed

The most powerful propulsion option combines the largest battery bank with the strongest electric motors available.

Higher speeds can be sustained for even longer periods of time while also maximizing the amount of energy which can be stored for back-up and deployed whenever needed.

Therefore, E-Power+ delivers the ultimate solar powered yachting experience.



ADDITIONAL KITE
SAIL SYSTEM

FULLY
AUTOMATIC
TOWING KITE

AVAILABLE FOR
ALL
OUR MODELS

DYNAMIC FLIGHT
PATTERN RESEMBLING A
FIGURE 8

UP TO 10x MORE POWER
PER m² COMPARED TO A
CONVENTIONAL SAIL

SILENT 62 3-DECK EQUIPMENT

STANDARD FEATURES

4 Cabins: 1 full-width (20 m²) Master-cabin , 1 VIP-cabin, 2 generous guest cabins, with 1 double bed or 2 single beds each. All cabins with en-suite bathroom.

2 x 50 kW e-motors on shafts, 143 kWh lithium battery, 100 kW diesel generator.

Electro-hydraulic steering and controls for 2 motors at the helm positions.

Side-by-side fridge/freezer with ice maker and chilled water.

Navigation instruments: 4 monitors 9" with world basemap, 4 G broadband radar, electronic compass, autopilot incl. controller and pump, rudder feedback, AIS class B, 2 set of VHF radio, antennas, depth sounder, weather station + 2x AP control unit.

High efficiency air conditioning system.

High pressure water maker producing 95 L / h.

Rigid sunroof over flybridge.

OPTIONAL FEATURES

Front exit and front cockpit.

Hydraulic stern-platform serves as a tender- lift and as a swimming platform.

Retractable sunroof incl. hydraulic lifting system, control switches + remote control.

SILENT



Multi-Award Winning Design & Engineering
sales@silent-yachts.com | www.silent-yachts.com