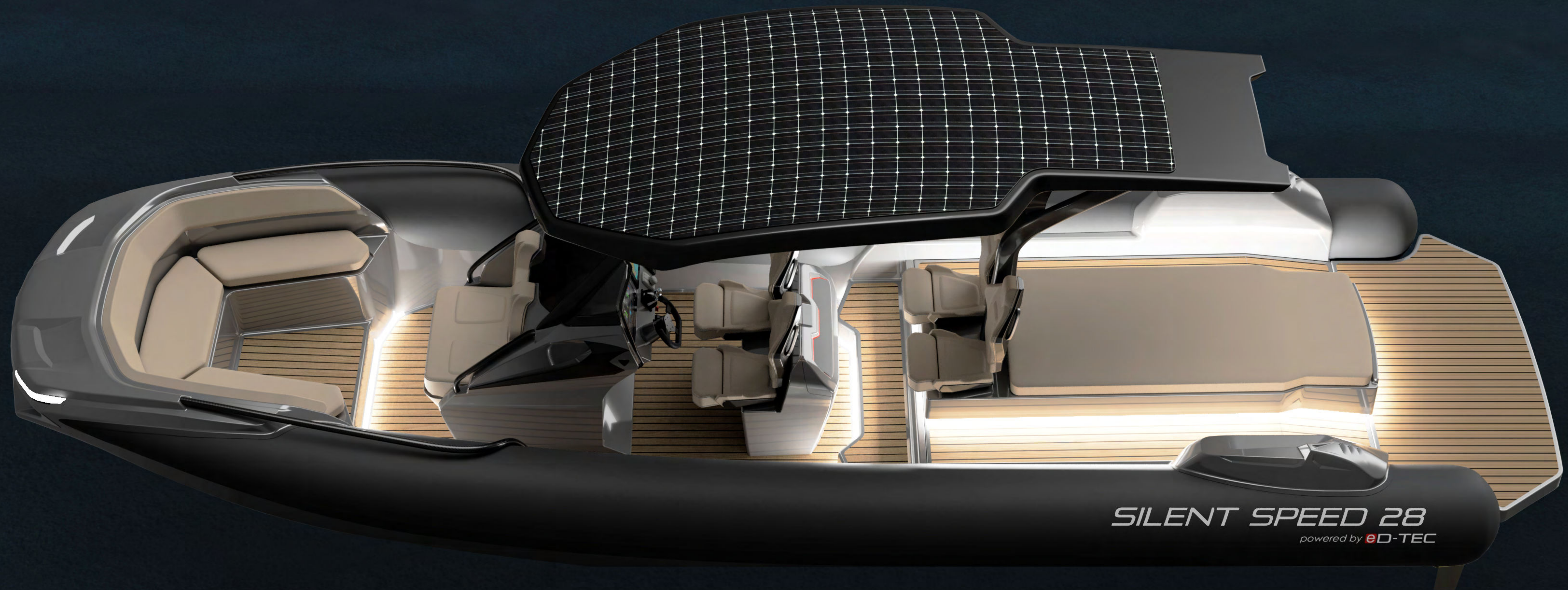


Silent Speed 28



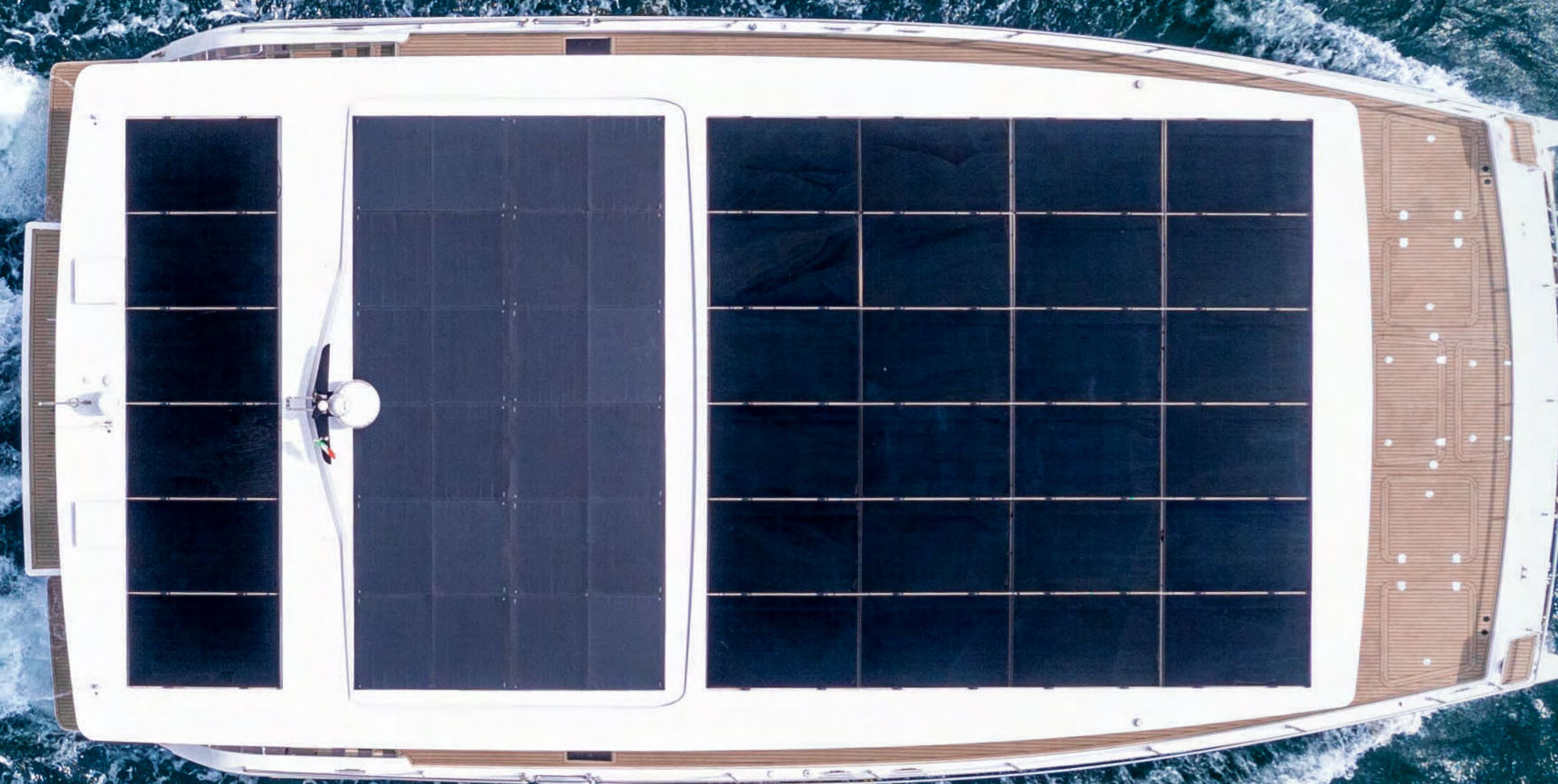
SILENT

1-3	Introduction
4	Silent Speed 28
5	Exterior
6	Specifications
7-8	Technology
9	Views
10	Production
11-12	Specifications & options



Create an independent and environmentally friendly yachting experience
which combines the silent cruising of a sailboat
with the luxury of a motor yacht.

THE FUTURE OF YACHTING IS SOLAR



Embrace the sound of silence.
Preserve the purity of the ocean.
Experience unprecedented levels of tranquility and pleasure.

By combining our futuristic design language with blistering pace and a superyacht finish, the Speed 28 is the first of a new breed of Silent. She is powered by a state of the art eD-TEC drivetrain, including foil assistance and embedded solar cells on the hardtop.

This innovative speedboat is ideally suited as a superyacht tender or as a fun boat that can easily be trailered. A perfect blend of unmatched performance with range and comfort.



Silent Speed 28

SILENT SPEED 28



SPECIFICATIONS



Length	8.6 m (28.2 ft)
Beam	2.8 m (9.6 ft)
Solar Power Generation	704 Wp
Top speed	60+ kn
Cruising speed	30 kn
Peak power	400 kW
Continuous power	200 kW
Lithium battery	99 kWh
Range	70+ nm
Fast charging	150 kW
Passengers	10



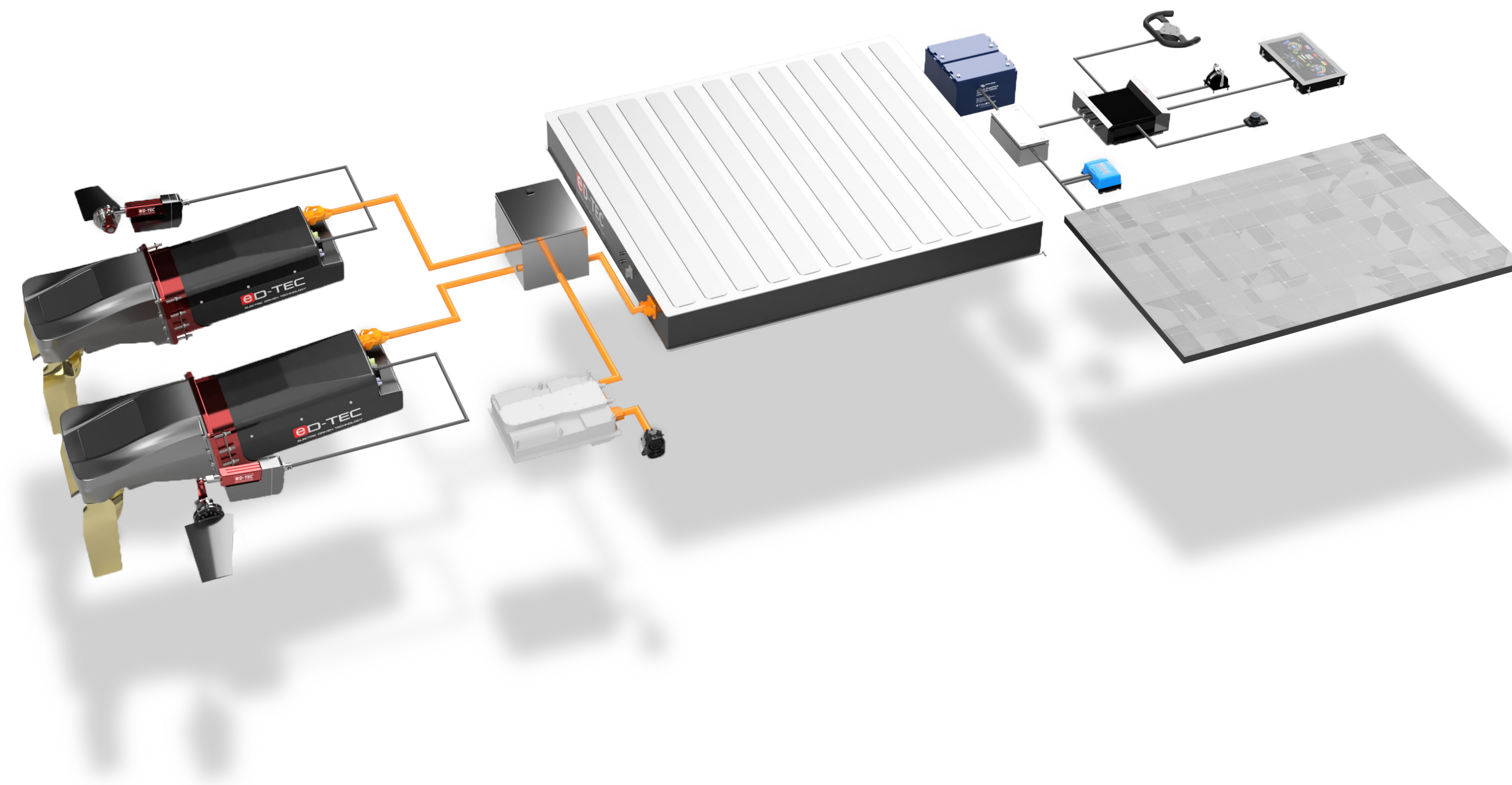
Tailor made user interface

The speedboat is controlled through an intuitive and custom designed user interface, which keeps the most vital information and functions always in sight.



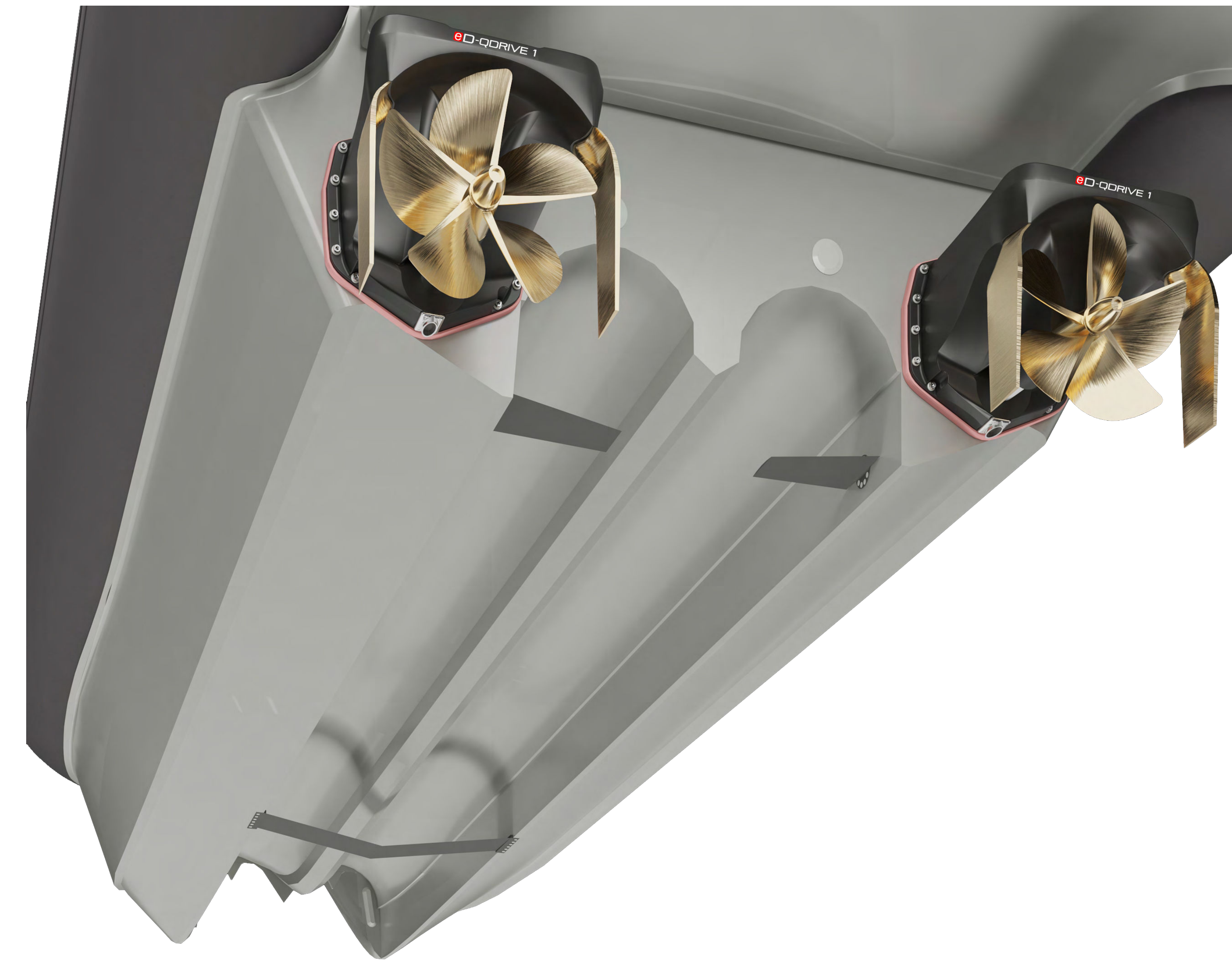
Artificial intelligence box

All components are interlinked to the AI box. This enables the system to constantly optimize performance and range while simultaneously reducing roll and pitch during cruising.



eD-Qdrive

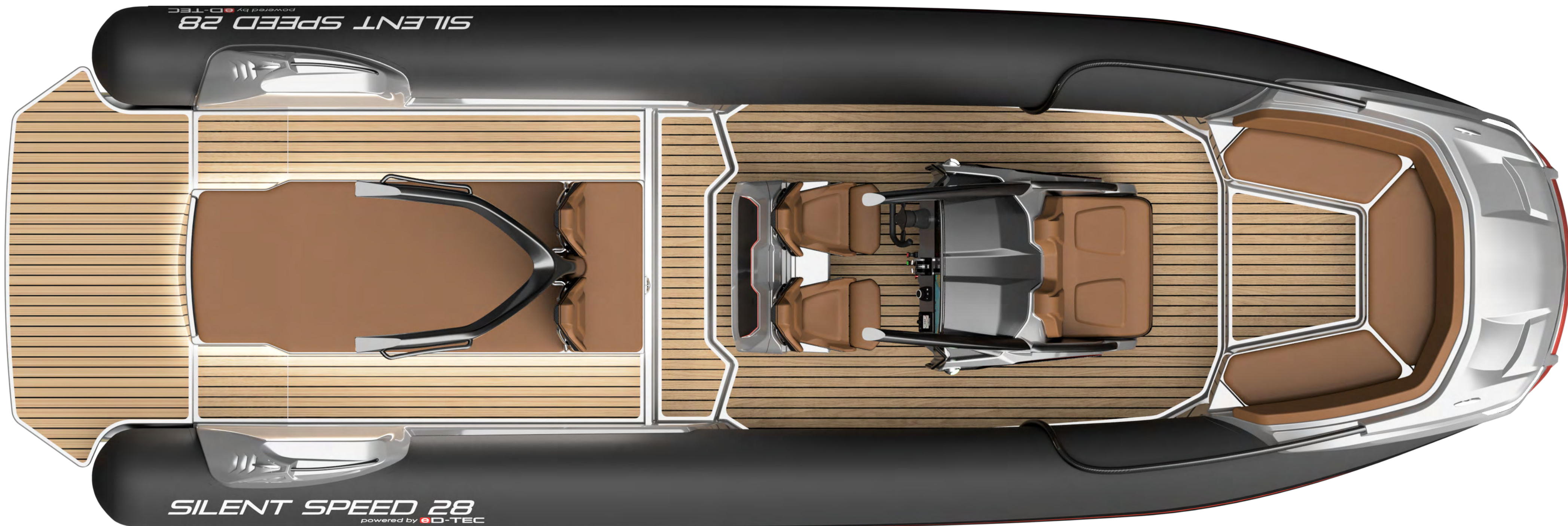
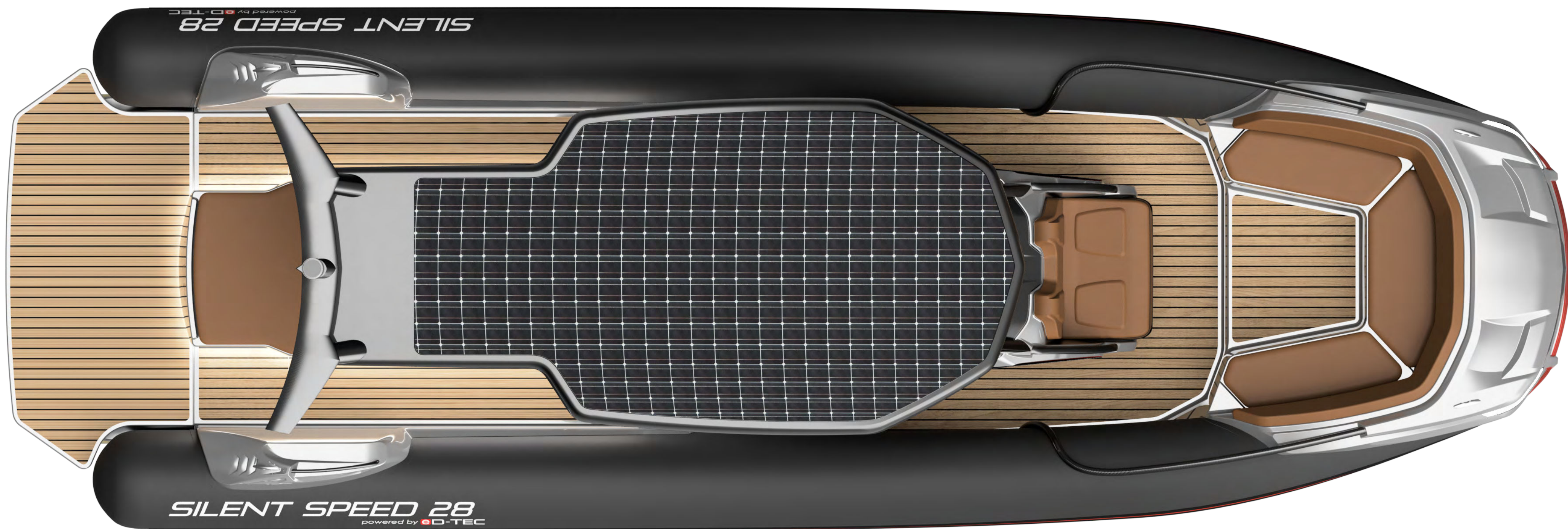
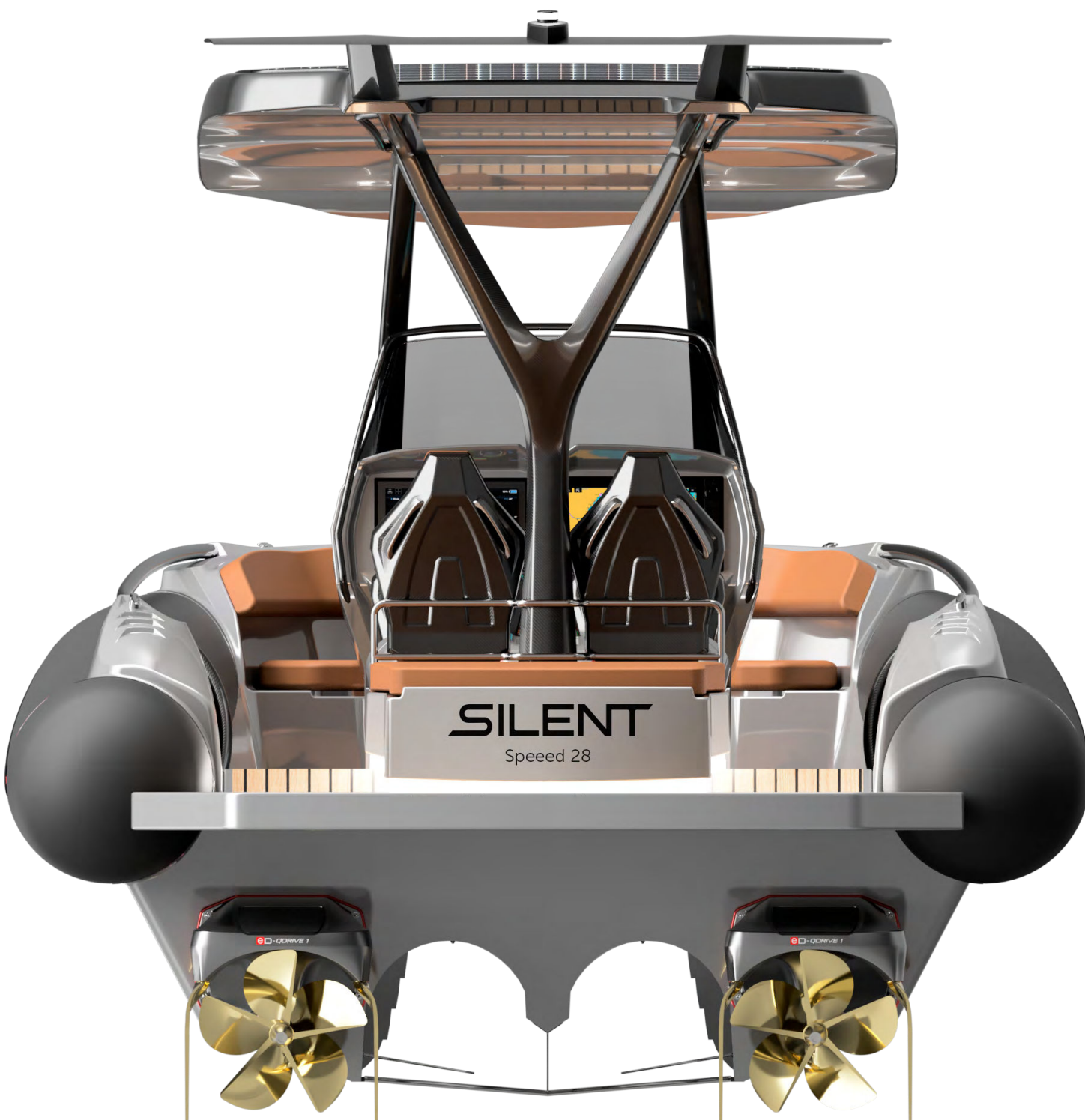
Designed to offer maximum performance and safety in combination with low maintenance. The system is equipped with an entirely redundant back-up control system as also used on airplanes.



Foil system

3 foils significantly increase range and comfort. In auto mode, the AI box assists the driver's inputs via the rudders, throttle and foils to create the most efficient cruising experience.

VIEWS



PRODUCTION #1
in the water in October 2022



SILENT SPEED 28 EQUIPMENT
STANDARD FEATURES

- Navigation lighting.
- Anchor lighting.
- Anchor & anchorwinch.
- Premium Sparco steering wheel.
- Redundant electric steering.
- Redundant electric throttle.
- Redundant 24 V power supply.
- Dual circuit cooling.
- AI box with safety PLC.
- Electric bilge pumps.
- Electronic kill cord (MOB+).
- Keyless start/stop system.
- User interface with 15.6" touchscreen and controller.

- Adjustable rear foils (trim tabs).
- Charging cable.
- Plotter (Axiom 15.6")
- Transducer.
- Metallic paint.
- Premium aupholstery.
- Sunbed.
- T-top roof:
 - Roof.
 - Spoiler.
 - Solar panel 704 Wp.
 - MPPT.

SILENT SPEED 28 EQUIPMENT
OPTIONAL FEATURES

Entertainment pack 6.070€

- Rockford Fostgate stereo.
- Lighting under sunbed & step.
- Underwater lights (2x stern, 2x bow).
- Roof lighting.

Connectivity pack 3.240€

Update, ungrade over the air.

- Router.
- App access.
- App connect for 1 year incl..

Navigation pack 8.060€

- Autopilot.
- VHF (RAY 53).
- Wind sensor.

Shower pack 3.370€

- Tank 35 L with pump.
- Shower head.

SILENT



Multi-Award Winning Design & Engineering
sales@silent-yachts.com | www.silent-yachts.com