



4 images >

First Silent Yachts 100 Explorer yacht sold

18 October 2021 • Written by Miranda Blazeby

Electric yacht builder [Silent Yachts](#) has sold the first unit of its new 31 metre flagship model, the Silent 100 Explorer.

Designed by [Marco Casali](#), the first Silent 100 Explorer is due for delivery in 2023.

Read More / [Silent Yachts sells first three 24m Silent 80 tri-deck catamarans](#)

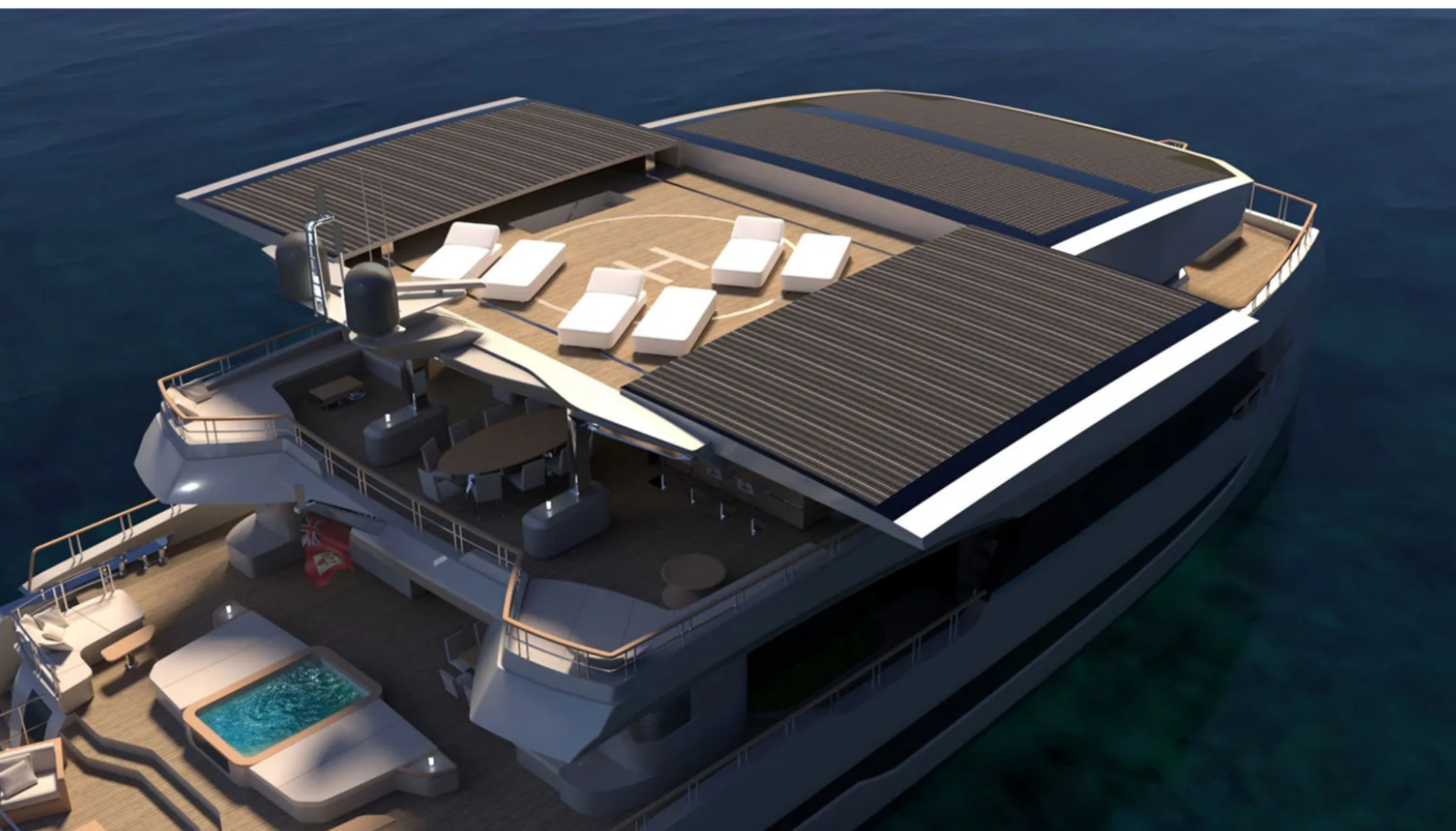
Speaking about the sale, Silent Yachts founder and chief executive Michael Köhler said: “This new sale coming after the sale of three of our 80-foot models in rapid succession and confirms the market’s interest in the superior comfort of catamarans and solar energy for propulsion needs, as well as all the household appliances on board.”

Revealed as the builder’s new flagship at the 2021 Cannes Yachting Festival, the Silent 100 Explorer features a beam of 13.62 metres and a 440GT interior.



Spread across four decks, the yacht is fitted with a solar-electric drive train providing a cruising speed of 10 knots and a top speed of 14-16 knots.

Designed to have worldwide cruising capabilities, the yacht features solar panels fitted along the hardtop that slides out to reveal a sundeck that can double up as a touch and go helipad.



Spread across four decks, the yacht is fitted with a solar-electric drive train providing a cruising speed of 10 knots and a top speed of 14-16 knots.

Designed to have worldwide cruising capabilities, the yacht features solar panels fitted along the hardtop that slides out to reveal a sundeck that can double up as a touch and go helipad.



The crucial difference between the previous flagship, the Silent 80, is the amount of additional space on board, the builder said. For example, the Silent 100 Explorer's master suite measuring 51 sqm in comparison to the 27 sqm suite on the Silent 80..

Elsewhere on the 100, five ensuite cabins sit on the main deck in the starboard hull, with the full-beam master sitting forward. The aft section of the main deck is dedicated to a saloon and dining area while a hot tub sits on the open aft deck alongside a bar and breakfast table. The galley, crew quarters and hotel services are all housed in the port hull.

A 7.5m limo tender can be stored between the two hulls, while a crew tender and toys can be stored in the side-loading garage in the portside hull.

Speaking about the new model, Casali said: "The kind of available spaces, fully customizable from the clients, will allow unique internal and external spaces not even achievable on much bigger superyachts like owner's quarters or large saloons."