

# Silent-Yachts has sold the first unit of its flagship 31m Silent 100 Explorer

Written by **Alexander Griffiths**



18 October 2021 | 12:45 ()

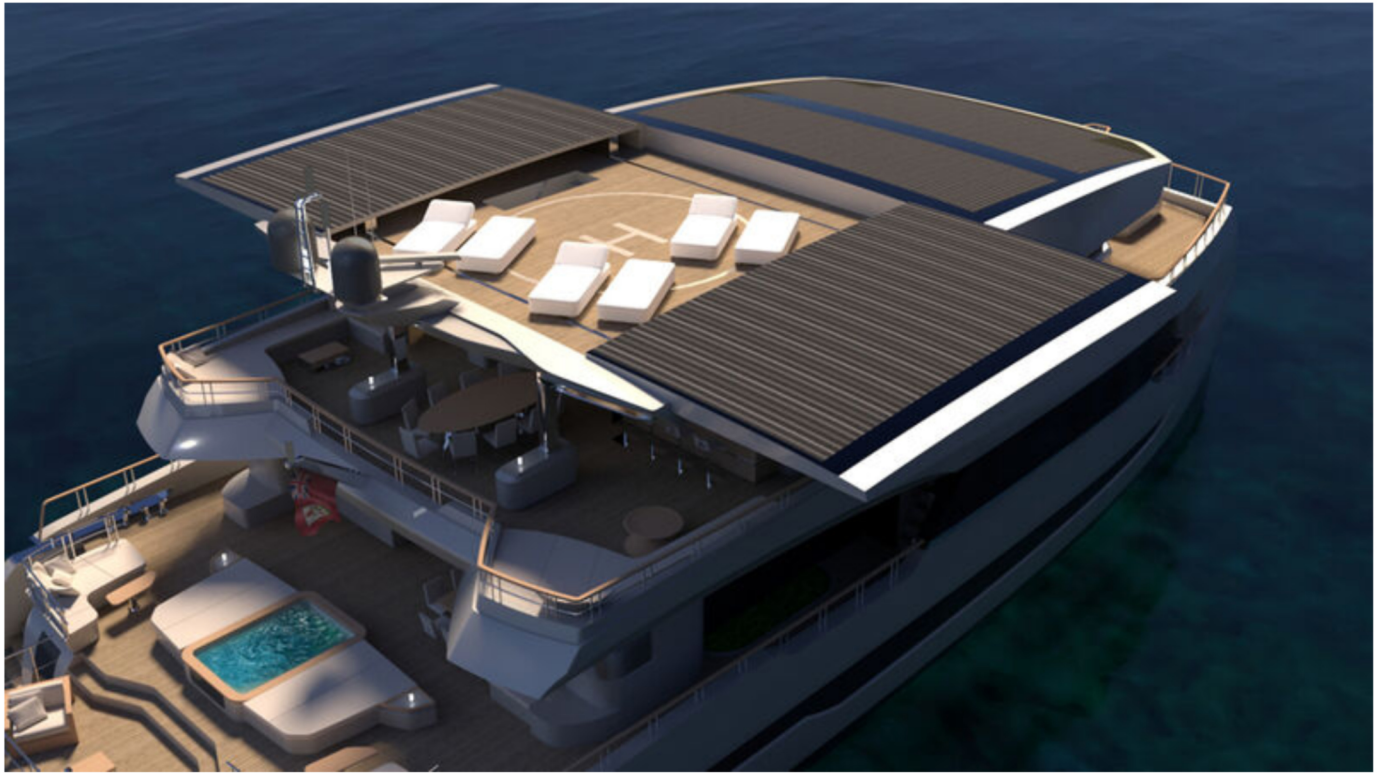
[Silent-Yachts](#) only unveiled its new flagship model, the 31-metre *Silent 100 Explorer* catamaran, last month at the 2021 [Cannes Yachting Festival](#), and has already sold the first unit with a scheduled delivery in 2023.



“This new sale, coming after the sale of three of our 80-foot models in rapid succession, confirms the market’s interest in the superior comfort of catamarans and solar energy for propulsion needs,” says [Silent-Yachts](#) founder and CEO, Michael Köhler.

The *Silent 100 Explorer* is equipped with a solar-electric drivetrain that is deadly quiet and highly capable. The design team have created a stellar vessel that can comfortably circumnavigate the globe, efficiently. Renewable energy is sourced from a collection of solar panels in her hardtop that provide up to 40kWp and which slide apart to reveal a sundeck. This space is multi-functional and can easily double down as a touch-and-go helipad or as an open air gym.





“The *Silent 100 Explorer* is a great challenge proving the solar revolution of *Silent-Yachts* to the superyacht level,” said designer *Marco Casali*. “The kind of available spaces, fully customisable from the clients, will allow unique internal and external spaces not even achievable on much bigger superyachts like owner’s quarters or large saloons. The *Silent 100 Explorer* will bring the experience of cruising to a next level becoming a world reference for a responsible yachting always connected to the respect of the environment.”

The *Silent 100 Explorer* boasts a grand stature with a 10.46-metre height, consisting of four decks with a beam of 13.62-metres. With an interior volume of 440 GT, she is incredibly spacious and is said to have outdoor and indoor living spaces equivalent to that of a 40-45-metre monohull motor yacht.





She has five ensuite guest cabins on the main deck and in the starboard hull, in addition to her full-beam master stateroom, equipped with a private office on the main deck forward. The *Silent 100 Explorer* boasts plenty of space for relaxation: an open aft deck with a hot tub and a panoramic balcony; a fly deck with sunbathing space and a wet bar. There is also plenty of opportunity to dine al fresco in her sky lounge or on the open aft deck.

“The sheer amount of family-friendly space has to be experienced to be believed,” Michael Köhler said. “It also means that clients are free to customise the arrangement according to personal preference. Do you want a gym or media room, a large VIP suite or a country kitchen on the main deck? No problem. The flexibility of the catamaran configuration means we can meet most requests.”

Designed with privacy in mind, the *Silent 100 Explorer* has a spiral staircase exclusive for the guests to use when they are moving from deck to deck. The galley, crew quarters and hotel services are all housed in the portside hull and are self contained thanks to a dedicated stairwell.



She has plenty of space for toys and tenders too, as she has a garage that can easily accommodate a 7.5-metre limousine tender alongside a secondary crew tender and any other gear the owner may want to store. In terms of performance, she has an economic speed of 6-8 knots, a cruising speed of 10 knots and a top speed of 14-16 knots.