

POWERBOAT & RIB

OVERVIEW | SILENT YACHTS SY62 3-DECK



SILENT YACHTS SY62 3-DECK

Silent in name and concept, this solar cat has true off-grid potential, as Greg Copp discovers.

The SY62 3-Deck from Italy-based Silent Yachts is a 62-footer in a class of its own. Though it may be Silent Yachts' smallest, it has no less than 240 square metres of usable deck space. Spacious luxury is certainly the theme behind

this boat's design, but the most impressive aspect of the SY62 is its near-autonomous capabilities. I say near-autonomous, because some people's power needs may exceed the staggering output of its solar panel array. The array is rated to 16.8kWh, which in real terms relates

to an output of 13kWh in perfect conditions – and each individual panel can be easily replaced if damaged. Without air conditioning you can run the domestic needs of this big cat pretty much endlessly; however, with the air con running overnight, the system

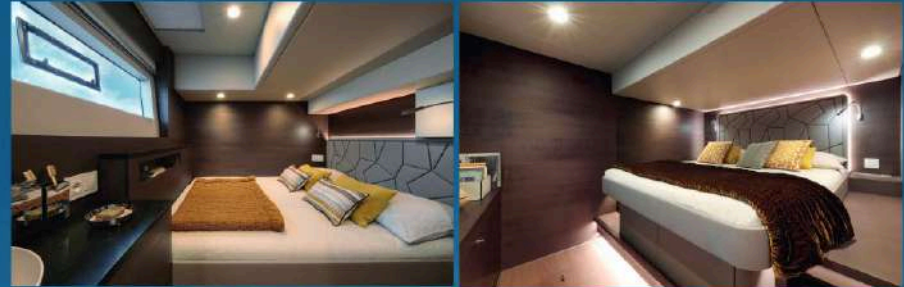


may need to start topping up in the morning – depending on the weather, of course. It has a generator, otherwise referred to as a 'range extender', as its 145kW output serves to keep the huge lithium battery bank topped up underway as and when. Twin electric motors can be specified from 50kW up to 340kW. The more powerful the motors, the larger the battery bank that drives them – in this case, up to 286kWh. This lithium-ion battery bank has a 'robust management system' that guarantees performance and safety, with easy battery access through hatches in the saloon floor.

IT HAS A GENERATOR, OTHERWISE REFERRED TO AS A 'RANGE EXTENDER', AS ITS 145KW OUTPUT SERVES TO KEEP THE HUGE LITHIUM BATTERY BANK TOPPED UP ...

The cruising speed on all models is 6-8 knots, and depending on the engine output, the maximum speed is up to 12 knots. However, this vessel is not realistic when run flat out, as within 8nm at 12 knots you will have reduced its battery capacity to its 10% safe depth of discharge (DOD), and the generator will kick in. However, at 6 knots, the SY62 is claimed to be able to cover 35 to 40 nm before you reach battery DOD. For those out for a leisurely cruise, this will suffice, but if you need to cover some sea miles, you will have to rely on using some fossil fuel. There is also another option that is in the final stages of development, and that is a kite. Connected to the bow, a prototype self-inflating kite with 18-knot wind speeds has enabled the SY62 to maintain credible cruising speeds with just a token amount of electrical propulsion

© 1: The cockpit enjoys perfect continuity with the galley. 2: The forward door opens to a recessed seating/loving area. 3: The port side part of the galley.



© 7: One of the guest double cabins. 2: The master cabin is impressive for a multihull boat.

to maintain steerage. The fore section of the hull has been built to take the stresses of the kite, with a forward storage section to house it.

With a focus on warm climates, the SY62 3-Deck's huge flybridge will have a strong appeal. It has a hardtop supported on two legs and four supports, providing almost uninterrupted 360-degree

views. It provides plenty of shade, while a massive expanse of elevated sunbathing space sits at the aft end. The first boat built has a three-stool wet bar at the centre of the flybridge, behind the double helm station. For most boats, this would represent a big galley in itself, as it comes fitted with a sink, a griddle, a large fridge and even a dish washer.

The whole flybridge is surrounded by sofa seating, upholstered in weatherproof Sunbrella fabric, and with a high/low table located in the aft section of the flybridge.

The lower helm station in the main deck saloon is a large set-up, with three armchair-like seats facing a triple spread of 18" MFDs. The main deck itself provides a giant social space that

offers lounging and dining on a range of built-in sofas. The galley sits across the aft section of the main deck/saloon and, not too surprisingly, is one of the most impressive aspects of the boat. It comprises a large U-shaped galley in the port quarter, fitted with a huge sink, induction hob, dish washer, oven/microwave combination and plenty of

THE FIRST BOAT BUILT HAS A THREE-STOOL WET BAR AT THE CENTRE OF THE FLYBRIDGE, BEHIND THE DOUBLE HELM STATION.





storage. The fit and finish is of the highest standard, notably the granite-effect Corian worktop. Opposite, the galley extends down the starboard side, and this is where the catering aspect of this 'stand-alone boat' excels. At first glance, it seems that you are graced with a very large full-height fridge freezer and a selection of eight large pull-out drawers; however, four of these drawers are drawer fridges, which, with their temperature control switches, can be individually configured to serve as extra freezers if need be.

Steps lead down to the skirts of each hull, making it easy to access a marina pontoon either aft-to or alongside. Together with the teak-lined bathing platform, this aft area becomes an 8m-wide focus for water sports. The platform also doubles as a tender lift that is capable of raising and storing a boat of up to 500kg. Broad side decks lead forward to the bow area, which features either a forward lounge or a row of sunbeds laid out on the low roof over the master cabin. In total, there are 75 square metres of exterior space at the main deck level.

1: The starboard side of the galley runs down half the length of the saloon. 2: Headroom and window space are impressive. 3: The helm enjoys unparalleled luxury.

SPECIFICATIONS

- LOA:** 18.86m
- Beam:** 8.99m
- Draught:** 1.26m
- Air draught:** 8.07m
- RCD rating:** A for 14
- Berths:** 6 to 10
- Fuel capacity:** 2 x 500L to 2 x 950L
- Water capacity:** 2 x 500L
- Battery capacity:** 207kWh or 286kWh
- Solar array:** 16.8kWh
- Range extender output:** 145kWh
- Displacement:** 46.7 tonnes (light ship)
- Max. speed:** 12 knots
- Price:** Circa €4.5M

CONTACT

www.silent-yachts.com



Accommodation options

Forward saloon door option

Owners can choose between either a forward exit from the saloon to a recessed forward lounge or a large central master cabin that spans the twin hulls on the lower deck. This gives owners a delightful shaded seating area and a raised sunbed with

an unbeatable view of the anchorage. The robust sea-tight door gives access to the front of the saloon, where there is a large sofa area to port.

Central owner's stateroom option

Alternatively, the front master cabin option provides a fantastic central owner's cabin in place of the forward lounge. It offers good headroom and superb views

ahead through a raised window section that runs the whole width of the cabin. With its own dedicated companionway, this is a private haven that boasts a large bathroom with separate shower, heads and basins, plus lots of hanging and storage space.

There is additional space for three good-sized double cabins - two to port and one to starboard. Each is bright with natural light and has its own en suite with a separate shower. In total, the cabins in the Front Master version of the SY62 3-Deck add up to 63 square metres. In the Front Exit version, there is 56 square metres of cabin space, configured with two in each hull. The owner's cabin retains its separate companionway. Interior styling is a matter

of choice as there are various options. The first SY62 3-Deck features a suitably contemporary blend of cream-coloured leather headlining, grey upholstery and natural wood for cabinetry and for floors, with modern porcelain and stainless steel tap fittings in the bathrooms, as well as high-end appliances in the galley. On a vessel of this size and capability, storage is a crucial asset, and the SY62 possesses plenty of it. There are lockers, racks and shelves all over the boat, but the biggest area is the 11-square-meter storage bins that fill the whole bow of the boat. Anything from paddleboards and sea bobs to the newly developed kite sail and spare parts can find a home here. The cockpit also provides lots of under-seat storage, plus deep lockers in the deck sole.

LAYOUTS



UPPER DECK - 3 Deck Open



UPPER DECK - 3 Deck Closed



MAIN DECK - 3 Deck Front Exit



MAIN - Alternative Saloon Layout